


F/W 2016-17 WORKBOOK





MAN 3
WOMAN 34
JUNIOR 50
MINIOR 87
ACCESSORIES 88
MATERIAL GUIDE 94
RESPONSIBILITY 98

MAN





GTS JACKET
VENTURE 16 PANT

7127

GTS JACKET

S-XXL
ACTIVE FIT

durAtec
EXTREME



85% nylon
15% spandex

Details:
100% polyester

- Wind- and waterproof
- All seams sealed
- Good breathability
- Stretch fabric
- Regular padding
- Pit zip ventilation system
- Adjustable, removable hood
- Adjustable sleeves with zip
- Lycra cuffs

- Removable stretch snowskirt
- Smock at bottom
- 4 outer pockets (total)
- Ski pass pocket
- Fleece-lined waist pockets
- Waterproof zippers
- Metal details
- Badge at sleeve
- Reflex details



03 RED



08 BLACK



81 TEAL



52 WHITE

7111

VENTURE 16 PANT

S-XXL
REGULAR FIT

durAtec
SUPREME

85% nylon
15% spandex

- Wind- and waterproof
- All seams sealed
- Excellent breathability
- Stretch fabric
- Fleece lining in bib and upper part
- Regular padding
- Snow gaiters

- Ventilation zip system
- Reinforcement patches at ankles
- Removable, adjustable bib suspenders
- Pre-shaped knees
- Belt included
- 2 outer pockets
- Fleece-lined pockets



08 BLACK



33 BLUE



03 RED



52 WHITE



13 YELLOW



15 NAVY

7106

DIMON JACKET

S-XXL
REGULAR FIT



84% nylon
16% spandex

Details:
100% polyester

- Wind- and waterproof
- All seams sealed
- Good breathability
- Stretch fabric
- Regular padding
- Adjustable, removable hood

- Pit zip ventilation system
- Adjustable sleeves with velcro
- Lycra cuffs
- Adjustable at bottom
- Removable stretch snowskirt
- 4 outer pockets (total)
- Ski pass pocket
- Fleece-lined waist pockets
- Inner mesh pocket
- Badge at sleeve



08 BLACK



15 NAVY



81 TEAL

7109

MISTI SHELL JACKET

S-XXL
ACTIVE FIT



85% nylon
15% spandex

- Wind- and waterproof
- All seams sealed
- Excellent breathability
- Stretch fabric
- Regular padding
- Adjustable, removable hood
- Adjustable sleeves with velcro
- Adjustable at bottom with drawstring

- Pit zip ventilation system
- Lycra cuffs
- Removable stretch snowskirt
- 4 outer pockets (total)
- Ski pass pocket
- Fleece-lined waist pockets
- Inner mesh pocket
- Waterproof zippers



13 YELLOW



03 RED



18 CHARCOAL



33 BLUE



08 BLACK

7110

RONIN JACKET

S-XXL
REGULAR FIT



30% nylon
51% polyester
17% polyurethane
2% elastane

- Windproof and water-repellent
- Excellent breathability
- Stretch fabric
- Removable stretch snowskirt
- Adjustable sleeves with velcro
- Adjustable at bottom with drawstring

- Pit zip ventilation system
- 4 outer pockets (total)
- Fleece backside
- Ski pass pocket
- Inner mesh pocket
- Fleece-lined waist pockets
- Waterproof zippers



13 YELLOW



52 WHITE



03 RED



15 NAVY



33 BLUE



08 BLACK



DIMON JACKET
VENTURE 16 PANT



MISTI SHELL JACKET
VENTURE 16 PANT



RONIN JACKET
GILLY PANT



VULPINE SHELL JACKET
ZAPALERI PANT

7107

GILLY PANT

S-XXL
ACTIVE FIT



30% nylon
51% polyester
17% polyurethane
2% elastane

- Windproof and water-repellent
- Good breathability
- Stretch fabric
- Light padding
- Snow gaiters
- Reinforcement patches at ankles
- Fleece backside
- Pre-shaped knees
- Removable suspenders
- Belt included
- 2 outer pockets
- Inner leg ventilation system



08 BLACK 78 GREY MELANGE 33 BLUE 03 RED 52 WHITE 13 YELLOW

7113

VULPINE SHELL JACKET

S-XXL
REGULAR FIT



100% nylon

- Wind- and waterproof
- All seams sealed
- Excellent breathability
- Mesh lining
- Adjustable, removable hood
- Adjustable sleeves with velcro
- Adjustable at bottom
- Removable stretch snowskirt

- 5 outer pockets (total)
- Pit zip ventilation
- Ski pass pocket
- Fleece-lined waist pockets
- Inner mesh pocket
- Waterproof zippers
- Welding details



C1 BLACK/BLACK L3 RED/RED L4 BLUE/BLUE 08 BLACK 33 BLUE 58 BURGUNDY 03 RED 81 TEAL

7114

ZAPALERI PANT

S-XXL
ACTIVE FIT



100% nylon

- Wind- and waterproof
- All seams sealed
- Good breathability
- Snow gaiters
- Pre-shaped knees
- Removable, adjustable bib suspenders
- Belt included
- 4 outer pockets
- Side zip ventilation system
- Adjustable waist with velcro
- Reinforcement patches at ankles
- Reinforcement at bottom legs



03 RED 08 BLACK 33 BLUE 81 TEAL

7130

TRIPLE FOUR JACKET

S-XXXL
REGULAR FIT



94% polyester
6% spandex

- Wind- and waterproof
- All seams sealed
- Good breathability
- Light padding
- Adjustable, removable hood
- Adjustable sleeves with velcro
- Adjustable at bottom with drawstring

- Lycra cuffs
- Removable stretch snowskirt
- 4 outer pockets (total)
- Ski pass pocket
- Fleece-lined waist pockets
- Inner mesh pocket
- Waterproof zippers



7108

KENSIN JACKET

S-XXL
ACTIVE FIT



94% polyester
6% spandex

- Wind- and waterproof
- All seams sealed
- Good breathability
- Regular padding
- Stretch fabric
- Fleece-lined back
- Adjustable hood
- Adjustable sleeves with velcro
- Removable stretch snowskirt
- Pit zip ventilation system

- Adjustable at bottom with drawstring
- Lycra cuffs
- 4 outer pockets (total)
- Ski pass pocket
- Fleece-lined waist pockets
- Inner mesh pocket
- Metal details
- Welding details



7122

BASE 68 PANT

S-XXXL
REGULAR FIT



100% nylon

- Wind- and waterproof
- All seams sealed
- Good breathability
- Light padding
- Snow gaiters

- Reinforcement patches at ankles
- Pre-shaped knees
- Removable suspenders
- Belt included
- 3 outer pockets
- Inner leg ventilation system
- Reinforcement at bottom legs
- Welded details



81 TEAL 03 RED 13 YELLOW 33 BLUE 52 WHITE 08 BLACK 15 NAVY



KENSIN JACKET
BASE 68 PANT



TRANS ALP JACKET
STEVE SOFTSHELL PANT

7131

TRANS ALP JACKET

S-XXL
ACTIVE FIT



53% nylon
23% polyester
21% polyurethane
3% spandex

Front chest (contrast):
44% nylon
44% polyester
12% spandex

- Windproof and water-repellent
- 3-layer shell fabric
- Excellent breathability
- Stretch fabric
- Fleece lining
- Adjustable, removable hood
- Adjustable sleeves with velcro

- Adjustable at bottom with drawstring
- 2 outer pockets (total)
- Fleece-lined waist pockets
- Reflex details
- Melange fabrics at chest



08 BLACK

33 BLUE

81 TEAL

13 YELLOW

7032

STEVE SOFTSHELL PANT

S-XXL
ACTIVE FIT



Front and upper back:
30% nylon
51% polyester
17% polyurethane
2% elastane

Back tricot:
88% nylon
12% elastane

- Windproof and water-repellent
- Excellent breathability
- Stretch fabric
- Fleece backside
- Reinforcement patches at ankles

- Pre-shaped knees
- Belt included
- Zip at bottom leg
- Reflex details



08 BLACK

33 BLUE

81 TEAL

7118

ECRIN SOFTSHELL JACKET

S-XXL
ACTIVE FIT

durAtec[®]
SOFTSHELL
ADVANCED



79% polyester
21% polyurethane

Back tricot:
87% nylon
13% spandex

- Superlight
- Windproof and water-repellent
- Excellent breathability
- Stretch fabric

- 3 outer pockets (total)
- Adjustable at bottom with drawstring
- Lycra cuffs
- Welded details



13 YELLOW

81 TEAL

33 BLUE

08 BLACK

7160

HEKLA TRAIL PANT

S-XXL
ACTIVE FIT

durAtec[®]
SOFTSHELL
ADVANCED



30% nylon
51% polyester
17% polyurethane
2% elastane

- Windproof and water-repellent
- Excellent breathability
- Stretch fabric
- Fleece backside

- Reinforcement patches at ankles
- Pre-shaped knees
- Zip at bottom leg
- Reflex details



08 BLACK

81 TEAL

78 GREY MELANGE



ECRIN SOFTSHELL JACKET
STEVE SOFTSHELL PANT



CORAM LINER
STEVE SOFTSHELL PANT

7126

CORAM LINER

S-XXL
ACTIVE FIT

100% polyester

Quilt:
100% nylon

- Technical liner
- Moisture-transporting
- Good breathability
- Quilted parts with light padding

- Contrast flatlocks
- 3 outer pockets
- Welded sleeve pocket
- Melange lycra tape



13 YELLOW



03 RED



08 BLACK



33 BLUE

7117

EAZY PRIMALOFT VEST

S-XXL
ACTIVE FIT



100% polyester
Primaloft ECO, 80 g

- Technical vest
- Moisture-transporting
- Good breathability
- Light padding

- Adjustable at bottom with drawstring
- 2 outer pockets



13 YELLOW



81 TEAL



03 RED



15 NAVY



33 BLUE



08 BLACK

7125

LORENZO SWEAT

S-XXL
ACTIVE FIT



94% polyester
6% spandex

- Light, technical sweatshirt
- Moisture-transporting
- Good breathability
- Stretch fabric

- Brushed backside
- Full zip
- Welded chest pocket



08 BLACK



33 BLUE



18 CHARCOAL



15 NAVY



81 TEAL



52 WHITE



EAZY PRIMALOFT VEST
LORENZO SWEAT
BASE 68 PANT



**BRADFORD LINER
BASE 68 PANT**

7115

BRADFORD LINER

S-XXL
ACTIVE FIT

Tricot:
100% polyester

Quilt:
100% nylon

- Light, technical liner
- Moisture-transporting
- Good breathability
- Light padding parts

- Fleece backside
- Full zip
- 3 outer pockets



08 BLACK



15 NAVY



81 TEAL

7119

JEAN SWEAT

S-XXL
REGULAR FIT

100% polyester

- Light, technical sweatshirt
- Moisture-transporting
- Good breathability
- Melange fabric at chest

- Melange lycra pipings at sleeve and bottom hem
- 3 outer pockets
- Fleece backside



33 BLUE



15 NAVY



03 RED



81 TEAL



52 WHITE



13 YELLOW



08 BLACK

7116

DON FLEECE

S-XXL
REGULAR FIT

100% polyester
micro fleece

- Fleece sweatshirt
- Moisture-transporting
- Good breathability

- Adjustable at bottom with drawstring
- 3 outer pockets



08 BLACK



33 BLUE



18 CHARCOAL



15 NAVY



03 RED



81 TEAL

7120

ODIN FLEECE VEST

S-XXL
REGULAR FIT

100% polyester micro fleece

- Fleece vest
- Moisture-transporting

- Good breathability
- 1 outer pocket



33 BLUE



08 BLACK



JEAN SWEAT
BASE 68 PANT



PERCIER HOODIE
STEVE SOFTSHELL PANT

7121

PERCIER HOODIE

S-XXL
REGULAR FIT



100% polyester

- Functional sweat hoodie with cotton look
- Moisture-transpiring

- Fleece backside, contrast colour
- Adjustable hood
- Rib cuffs at sleeves and bottom



10 LT GREY MELANGE



L2 BLACK MELANGE

7011

BEN 1/2 ZIP

S-XXL
ACTIVE FIT

92% polyester
8% elastane

- Light, technical 1st layer
- Moisture-transpiring
- Good breathability
- Stretch fabric

- Brushed backside
- 1/2 zip
- Welded details



33 BLUE



15 NAVY



18 CHARCOAL



08 BLACK

7026

THORN DOWN SHORTS

S-XXL
REGULAR FIT



100% nylon
100% duck down
650 fp

- Quilted
- Stretch fabric parts
- 2 outer pockets



08 BLACK

7124

ENZO 3/4 PANT

S-XXL
ACTIVE FIT



94% polyester
6% spandex

- Technical 1st layer pant
- Good breathability
- Moisture-transpiring
- Brushed backside
- Elastic band at waist
- Stretch fabric



C1 BLACK/BLACK

7137

NEO CREWNECK

S-XXL
ACTIVE FIT

48% merino wool
48% polyester
4% lycra

- Natural climate control for superior comfort
- Designed to keep the body cool and dry
- Rapidly draws sweat away from the skin

- Protection against post exercise chill
- Natural elasticity and shape retention
- Bacteria inhibiting and odour control
- Excellent breathability
- Print in carbon look



08 BLACK



33 BLUE



05 GREY

7138

TORY PANT

S-XXL
ACTIVE FIT

48% merino wool
48% polyester
4% lycra

- Natural climate control for superior comfort
- Designed to keep the body cool and dry
- Rapidly draws sweat away from the skin
- Protection against post exercise chill

- Natural elasticity and shape retention
- Bacteria inhibiting and odour control
- Excellent breathability



08 BLACK



33 BLUE



05 GREY

7139

BASE BOXER

S-XXL
ACTIVE FIT

48% merino wool
48% polyester
4% lycra

- Natural climate control for superior comfort
- Designed to keep the body cool and dry
- Rapidly draws sweat away from the skin
- Protection against post exercise chill

- Natural elasticity and shape retention
- Bacteria inhibiting and odour control
- Excellent breathability



08 BLACK



33 BLUE



05 GREY

7140

WT T-SHIRT

S-XXL
ACTIVE FIT

48% merino wool
48% polyester
4% lycra

- Natural climate control for superior comfort
- Designed to keep the body cool and dry

- Rapidly draws sweat away from the skin
- Protection against post exercise chill
- Natural elasticity and shape retention
- Bacteria inhibiting and odour control
- Excellent breathability



08 BLACK



33 BLUE



05 GREY



NEO CREWNECK
TORY PANT

7135

PEACH LAND PARKA

S-XXL
REGULAR FIT



100% nylon

- Wind- and waterproof
- All seams sealed
- Good breathability
- Regular padding
- Adjustable, fixed hood
- Adjustable sleeves with velcro

- Two-way front zipper
- Waterproof zipper
- Quilted lining
- Badge at sleeve
- 5 outer pockets
- Fleece-lined waist pockets



15 NAVY



51 MUD



08 BLACK

7112

WESTON ZIP-IN JACKET

S-XXL
REGULAR FIT



Shell:
94% polyester
6% spandex

- Zip-in-system
- Wind- and waterproof
- All seams sealed
- Good breathability
- Stretch fabric
- Regular padding
- Adjustable hood

- Mesh lining at upper back
- Adjustable sleeves with velcro
- Adjustable at bottom
- Waterproof zippers
- Badge at sleeve
- Inner jacket with synthetic padding

BLACK
INNER JACKET



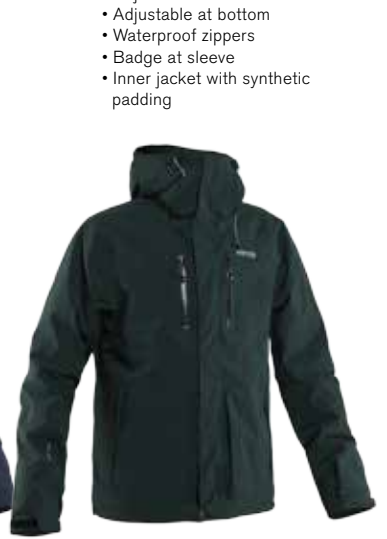
08 BLACK



51 MUD



15 NAVY



81 TEAL

7132

BONATO 16 ZIP-IN PARKA

S-XXXL
REGULAR FIT



100% nylon

Inner jacket:
100% polyester
70/30 duck down
500 fp

- Zip-in-system
- Wind- and waterproof
- All seams sealed
- Good breathability
- Mesh lining upper back
- Adjustable, removable hood
- Adjustable sleeves with velcro

- Adjustable at bottom
- Fleece-lined waist pockets
- Welded details
- Metal detail
- Diamond quilted inner jacket with duck down insulation

BLACK
INNER JACKET



51 MUD



81 TEAL



03 RED



15 NAVY



08 BLACK

7033

LYON JACKET

S-XXL
REGULAR FIT



100% nylon 6.6
80/20 duck down
550-600 fp

- Windproof and water-repellent
- Breathable
- Adjustable, removable hood
- Adjustable sleeves with snaps
- Two-way front zipper

- Adjustable at waist with drawstring
- Inner pocket
- 4 outer pockets (total)



08 BLACK

7134

TRANSIT JACKET

S-XXL
REGULAR FIT



100% nylon

- Wind- and waterproof
- All seams sealed
- Good breathability
- Mesh lining upper body
- Adjustable hood
- Adjustable sleeves with velcro

- Two-way front zipper
- Adjustable at bottom with drawstring
- 4 outer pockets (total)
- Rubber badge at sleeve



50 MUD



08 BLACK

7133

DRIFTER JACKET

S-XXL
REGULAR FIT



100% nylon

- Windproof and water-repellent
- All seams sealed
- Good breathability
- Light padding
- Adjustable, removable hood

- Adjustable sleeves with velcro
- Rib at bottom hem
- 2 outer pockets (total)
- Fleece-lined waist pockets
- Inner mesh pocket
- Embroidery badge



15 NAVY



08 BLACK



50 MUD

7129

WAY POINT JACKET

S-XXL
REGULAR FIT



100% nylon

- Wind- and waterproof
- All seams sealed
- 3-layer fabric
- Good breathability
- Fixed, adjustable hood

- Adjustable sleeves with velcro
- Adjustable at bottom with drawstring
- 3 outer pockets (total)
- Reflex details



08 BLACK

7136

GRIP COAT

S-XXL
LONG, LOOSE FIT



100% nylon

- Wind- and waterproof
- All seams sealed
- 3-layer fabric
- Good breathability
- Fixed, adjustable hood
- Adjustable sleeves with zip

- Adjustable at bottom with drawstring
- Waterproof zippers
- Two-way front zipper
- Welding details
- 2 outer pockets



08 BLACK

7105

DAFT SOFTSHELL JACKET

S-XXXL
REGULAR FIT



100% polyester

- Windproof and water-repellent
- Good breathability
- Stretch fabric
- Mesh lining at front
- Fleece backside
- Adjustable, removable hood

- Adjustable sleeves with velcro
- Adjustable at bottom with drawstring
- 4 outer pockets
- Fleece-lined waist pockets



81 TEAL

15 NAVY

50 MUD

18 CHARCOAL

33 BLUE

08 BLACK

7128

ZERO JACKET

S-XXL
REGULAR FIT

88% polyester
12% nylon

- Regular padding
- Rib at sleeves, bottom hem and collar
- Lycra cuffs

- Zipper pocket at sleeve
- Rubber badge at chest
- 3 outer pockets (total)
- Metal details



08 BLACK



50 MUD



15 NAVY

7064

BIRK JACKET

S-XXL
REGULAR FIT

100% polyester

- Diamond quilted
- Light padding
- 4 outer pockets

- Cord details
- Badge at sleeve



15 NAVY



48 DEEP RED



08 BLACK

7104

LINUS DOWN LINER

S-XXXL
REGULAR FIT



Outer fabric:
100% nylon
Padding:
100% duck down
650 fp

- Ultralight jacket
- Adjustable at bottom
- 2 outer pockets
- Inner mesh pocket

- Dull finish
- Lycra pipings
- Water resistant



08 BLACK



33 BLUE



50 MUD



15 NAVY



03 RED



81 TEAL

7002

JONES RAIN SET

S-XXXL
REGULAR FIT



100% polyester

- Wind- and waterproof
- All seams sealed
- Good breathability
- Mesh lining
- 2 outer pockets
- Inner mesh pocket
- Adjustable, removable hood
- Adjustable at bottom
- Waterproof front zipper
- Rain pant with elastic waist and adjustable width at bottom leg



50 MUD



08 BLACK



33 BLUE



BLACK PANT

7144

LASCAR SWEAT

S-XXL
REGULAR FIT

80% cotton
20% polyester
340 g

- Heavy sweat hood
- Terry backside
- Full zip
- Rib knitted at sleeves and hem

- Chest pocket
- Rubber badge at sleeve
- Heavy cotton drawstrings



10 LT GREY MELANGE

97 DK GREY MELANGE

7146

CHRIS HOODY

XS-XXL
REGULAR FIT

80% cotton
20% polyester
300 g

- Sweat hood
- Terry backside
- Full zip

- Rib knitted at sleeves and hem
- Embroidery at chest
- Heavy cotton drawstrings



L2 BLACK MELANGE

97 DK GREY MELANGE

10 LT GREY MELANGE

7147

CALBUTO SWEAT

S-XXL
REGULAR FIT

80% cotton
20% polyester
340 g

- Heavy sweatshirt
- Terry backside

- Debossed chest logo
- Rib knitted sleeve ends and hem



L2 BLACK MELANGE

97 DK GREY MELANGE

7148

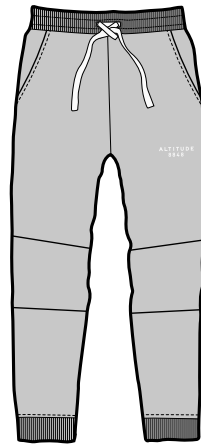
PIERCE PANTS

XS-XXL
SLIM FIT. LOOSE CROTCH.

80% cotton
20% polyester
300 g

- Sweat pant
- Terry backside
- Knitted cuffs

- Heavy cotton drawstring
- Embroidery at leg
- 2 pockets



10 LT GREY MELANGE



97 DK GREY MELANGE



L2 BLACK MELANGE

7145

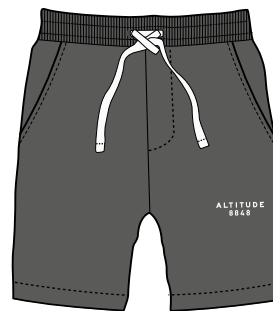
MONSERRATE SHORTS

XS-XXL
REGULAR FIT

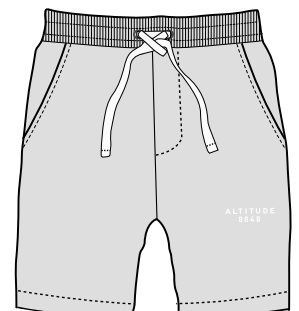
80% cotton
20% polyester
300 g

- Sweat shorts
- Terry backside
- Heavy cotton drawstring

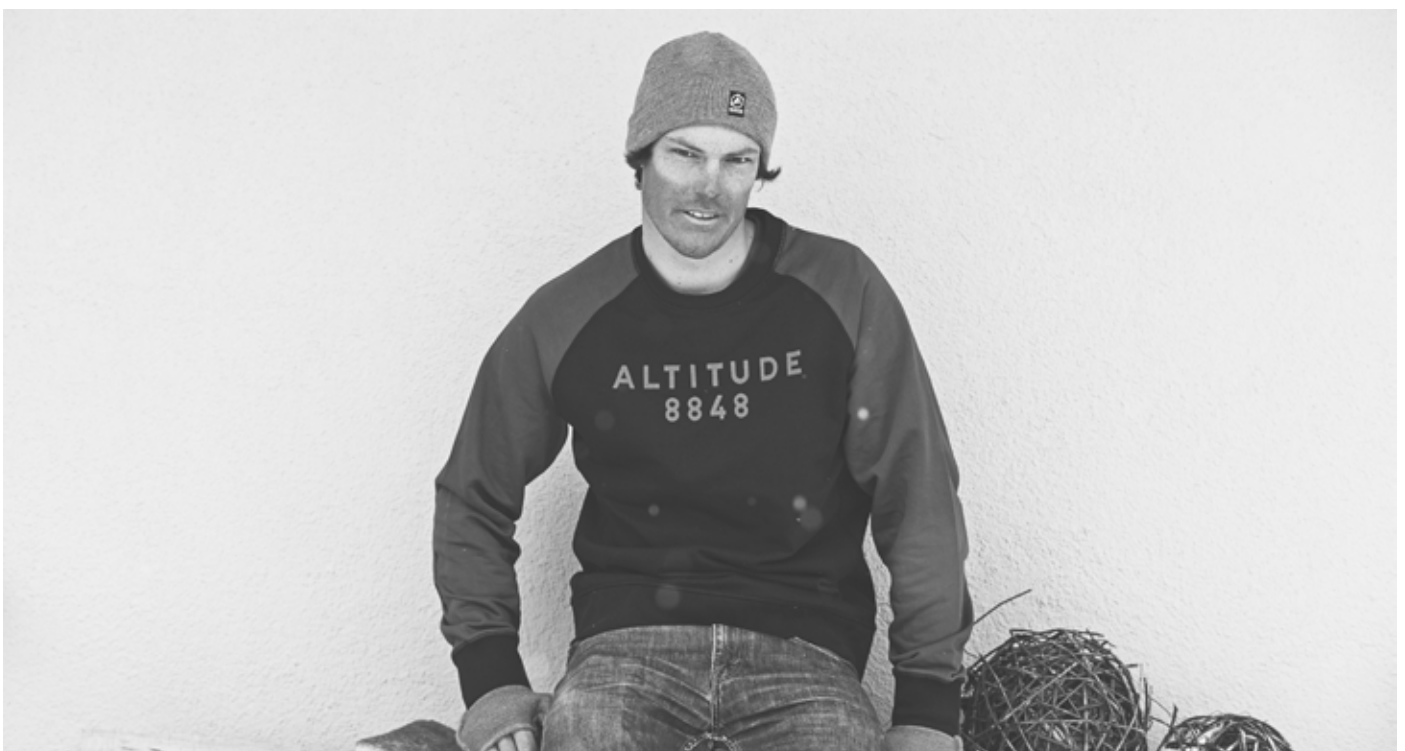
- Embroidery at leg
- 2 pockets



97 DK GREY MELANGE



10 LT GREY MELANGE





WOMAN





ELECTRA WS JACKET
FIONA WS PANT

6077

**ELECTRA
WS JACKET**

34-44
SLIM, FEMALE FIT

durAtec
EXTREME



85% nylon
15% Spandex

- Wind- and waterproof
- All seams sealed
- Good breathability
- Stretch fabric
- Regular padding
- Adjustable, removable hood
- Lycra cuffs
- Removable stretch snowskirt
- Pit zip ventilation system

- Smock at bottom
- 4 outer pockets (total)
- Ski pass pocket
- Fleece-lined waist pockets
- Inner mesh pocket
- Waterproof zippers
- Two-way front zipper
- Metal details



13 YELLOW



52 WHITE



15 NAVY



46 CERISE

6057

**JASMIN
WS JACKET**

34-44
SLIM, FEMALE FIT

durAtec
COMFORT

Main fabric:
84% nylon
16% Spandex

Quilt:
100% polyester

- Windproof and water-repellent
- Good breathability
- Stretch fabric
- Regular padding, "down touch"
- Adjustable, removable hood
- Adjustable sleeves with zip
- Pit zip ventilation system
- Lycra cuffs

- Smock at bottom
- Removable stretch snowskirt
- 3 outer pockets (total)
- Ski pass pocket
- Fleece-lined waist pockets
- Inner mesh pocket
- Waterproof zippers
- Metal details



03 RED



15 NAVY



08 BLACK

6055

**FIONA
WS PANT**

34-44
SLIM, FEMALE FIT

durAtec
SOFTSHELL

83% nylon
17% Spandex

- Windproof and water-repellent
- Excellent breathability
- Stretch fabric
- Light padding
- Smock parts
- Fleece lining at upper back
- Snow gaiters
- Reinforcement patches at ankles
- Pre-shaped, foam-padded knees
- Belt included
- 2 outer pockets
- Metal details



08 BLACK



52 WHITE



JASMIN WS JACKET
POPPY WS PANT



NIELA WS JACKET
POPPY WS PANT

6063

**NIELA
WS JACKET**

34-44
FEMALE FIT



Main fabric:
84% nylon
16% Spandex

Quilt:
100% polyester

- Wind- and waterproof
- All seams sealed
- Good breathability
- Regular padding
- Adjustable, removable hood
- Adjustable sleeves with velcro
- Adjustable at bottom with drawstring
- Removable stretch snowskirt
- Pit zip ventilation system
- Lycra cuffs
- 4 outer pockets (total)
- Ski pass pocket
- Fleece-lined waist pockets
- Inner mobile pocket
- Inner mesh pocket
- Waterproof zippers
- Assymetric zipper
- Metal details



08 BLACK



15 NAVY



03 RED



52 WHITE

6060

**MINDY
WS JACKET**

34-44
FEMALE FIT



Main fabric:
84% nylon
16% Spandex

Quilt:
100% polyester

- Wind- and waterproof
- All seams sealed
- Good breathability
- Regular padding
- Quilted parts
- Stretch fabric
- Adjustable, removable hood
- Adjustable sleeves with velcro
- Adjustable at bottom with drawstring
- Removable stretch snowskirt
- Pit zip ventilation system
- Lycra cuffs
- 3 outer pockets (total)
- Ski pass pocket
- Fleece-lined waist pockets
- Inner mobile pocket
- Inner mesh pocket
- Metal details
- Badge at sleeve



52 WHITE



58 BURGUNDY



15 NAVY



08 BLACK



MINDY WS JACKET
POPPY WS PANT



RAMONA WS JACKET
MIMMI WS SOFTSHELL PANT

6066

RAMONA WS JACKET

34-44
FEMALE FIT

durAtec
COMFORT

100% polyester

- Windproof and water-repellent
- Breathable
- Regular padding
- Quilted
- Stretch fabric
- Adjustable, removable hood
- Adjustable sleeves with velcro
- Adjustable at bottom with drawstring
- Removable stretch snowskirt
- Lycra cuffs
- 3 outer pockets (total)
- Ski pass pocket
- Fleece-lined waist pockets
- Inner mobile pocket
- Inner mesh pocket
- Two-way front zipper
- Metal details
- Badge at sleeve



08 BLACK

15 NAVY

03 RED

52 WHITE

6065

POPPY WS PANT

34-44
SLIM, FEMALE FIT

durAtec
EXTREME

84% nylon
16% elastane

- Wind- and waterproof
- All seams sealed
- Good breathability
- Stretch fabric
- Regular padding
- 2 outer pockets (total)
- Snow gaiters
- Reinforcement patches at ankles
- Pre-shaped knees
- Removable, adjustable bib suspenders
- Adjustable waist
- Metal logo



52 WHITE

03 RED

58 BURGUNDY

15 NAVY

08 BLACK



KAJSA WS SOFTSHELL JACKET
MIMMI WS SOFTSHELL PANT

6058

**KAJSA WS
SOFTSHELL JACKET**

34-44
SLIM, FEMALE FIT

durAtec®
SOFTSHELL
ADVANCED



53% nylon
23% polyester
21% polyurethane
3% elastane

- Windproof and water-repellent
- Excellent breathability
- Stretch fabric
- Regular padding
- Adjustable, removable hood
- Adjustable sleeves with velcro
- Lycra cuffs

- Removable stretch snowskirt
- Waterproof zippers
- 4 outer pockets (total)
- Ski pass pocket
- Fleece-lined waist pockets
- Adjustable at bottom with drawstring



6059

**MIMMI WS
SOFTSHELL PANT**

34-44
SLIM, FEMALE FIT

durAtec®
SOFTSHELL
ADVANCED



30% nylon
51% polyester
12% polyurethane
2% Spandex

- Windproof and water-repellent
- Good breathability
- Stretch fabric
- Fleece backside
- 2 outer pockets (total)

- Snow gaiters
- Pre-shaped knees
- Belt included
- Adjustable leg length with zipper



6061

**MIVA
WS JACKET**

34-46 FEMALE FIT



94% polyester
6% Spandex

- Wind- and waterproof
- All seams sealed
- Good breathability
- Stretch fabric
- Regular padding
- Adjustable sleeves with velcro
- Adjustable, removable hood
- Adjustable at bottom with drawstring

- Removable stretch snowskirt
- Fleece-lined waist pockets
- Lycra cuffs
- 4 outer pockets (total)
- Ski pass pocket
- Inner mobile pocket
- Inner mesh pocket
- Two-way front zipper
- Waterproof zippers



6053

**CLEARE
WS PANT**

34-46
FEMALE FIT



94% polyester
6% Spandex

- Wind- and waterproof
- All seams sealed
- Good breathability
- Stretch fabric
- Regular padding
- Fleece lining at upper back
- 3 outer pockets (total)

- Snow gaiters
- Reinforcement patches at ankles
- Pre-shaped knees
- Removable suspenders
- Belt loops
- Adjustable waist with velcro





MINDY WS JACKET
CLEARE WS PANT



BAY WS JACKET
LAGUNA WS PANT



SHELLY WS SOFTSHELL JACKET
LAGUNA WS PANT

6069

**BAY
WS JACKET**

34-44
SLIM, FEMALE FIT



Main fabric:
79% polyester
21% polyurethane

Tricot:
95% polyester
5% Spandex

Woven:
100% nylon

- Lightweight
- Windproof and water-repellent
- Excellent breathability
- Light padding
- Stretch fabric
- Adjustable, removable hood
- Adjustable at bottom with drawstring
- 3 outer pockets (total)
- Ski pass pocket
- Fleece-lined waist pockets



08 BLACK



46 CERISE



52 WHITE



13 YELLOW

6076

**SHELLY WS
SOFTSHELL JACKET**

34-44
SLIM, FEMALE FIT



Main fabric:
79% polyester
21% polyurethane

Tricot:
87% polyester
13% Spandex

- Windproof and water-repellent
- Excellent breathability
- Stretch fabric
- 2 outer pockets (total)
- Fleece-lined at center back
- Thumb holes at sleeve ends



46 CERISE



52 WHITE



08 BLACK

6983

LAGUNA WS PANT

34-44

SLIM, FEMALE FIT

durAtec[®]
SOFTSHELL
ADVANCED



Front and upper back:
30% nylon
51% polyester
17% polyurethane
2% elastane

Back bottom:
88% nylon
12% elastane

- Windproof and water-repellent
- Excellent breathability
- Stretch fabric
- 3 outer pockets (total)
- Fleece backside lower
- Reinforcement patches at ankles
- Pre-shaped knees
- Partial side zip ventilation system
- Adjustable waist
- Reflex details



08 BLACK



46 CERISE



52 WHITE



13 YELLOW

6093

HEKLA WS TRAIL PANT

34-44

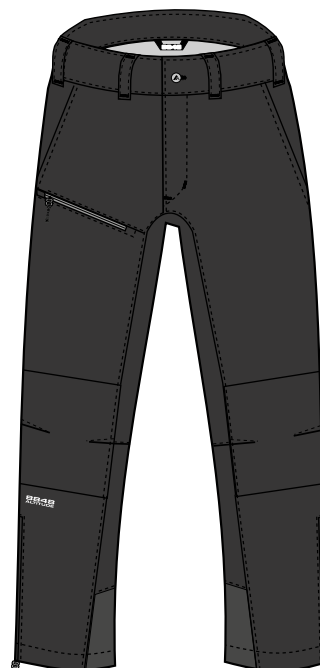
SLIM, FEMALE FIT

durAtec[®]
SOFTSHELL
ADVANCED

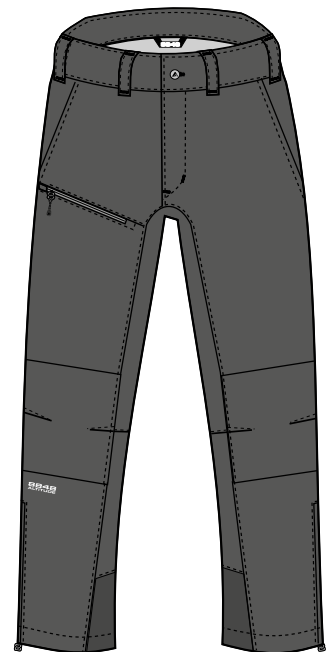


30% nylon
51% polyester
17% polyurethane
2% elastane

- Windproof and water-repellent
- Excellent breathability
- Stretch fabric
- Fleece backside
- Reinforcement patches at ankles
- Pre-shaped knees
- Zip at bottom leg
- Reflex details



08 BLACK



78 GREY MELANGE



MADDIE WS SWEAT
MIMMI WS SOFTSHELL PANT

6073

**MADDIE
WS SWEAT**

34-44
SLIM, FEMALE FIT

100% polyester
Melange details:
44% nylon
44% polyester
12% Spandex

- Technical liner
- Moisture-transporting
- Good breathability
- Fleece backside

- Melange fabric at chest
- Adjustable at bottom with drawstring
- 2 outer pockets



08 BLACK



46 CERISE



18 CHARCOAL



15 NAVY



13 YELLOW

6072

**LOUMIN
WS SWEAT**

34-44
FEMALE FIT

100% polyester
Details:
94% polyester
6% spandex

- Technical sweatshirt
- Moisture-transporting
- Good breathability
- Adjustable at bottom with drawstring

- Fleece backside
- 2 outer pockets
- Contrast panel at back



46 CERISE



13 YELLOW



52 WHITE



58 BURGUNDY



08 BLACK

6078

**CASTEL
WS SWEAT**

34-44
FEMALE FIT



93% polyester
7% elastane

- Technical sweatshirt
- Moisture-transporting
- Good breathability
- Brushed backside

- Stretch fabric
- Welded sleeve pocket
- Contrast flatlocks



08 BLACK



58 BURGUNDY



46 CERISE



18 CHARCOAL



15 NAVY



13 YELLOW



LOUMIN WS SWEAT
LAGUNA WS PANT



CASTEL WS SWEAT
MIMMI WS SOFTSHELL PANT

6068

ALYSSA WS SWEAT

34-44
FEMALE FIT

100% polyester

- Technical hood sweatshirt
- Moisture-transporting
- Good breathability
- Adjustable at bottom
- 3 outer pockets
- Welded chest pocket
- Adjustable hood
- Full zip



08 BLACK

46 CERISE

18 CHARCOAL

15 NAVY

52 WHITE

6075

ROCHELL WS FLEECE

34-44
FEMALE FIT

100% polyester
micro fleece

- Fleece sweatshirt
- Moisture-transporting
- Good breathability
- Stretch fabric
- Adjustable at bottom with drawstring
- 2 pockets
- Full zip



41 ROSE

18 CHARCOAL

58 BURGUNDY

68 SILVER

03 RED

46 CERISE

08 BLACK

6070

BRADLINA WS SWEAT

34-44
FEMALE FIT



95% polyester
5% Spandex
Quilt:
100% nylon

- Light, technical liner
- Moisture-transporting
- Good breathability
- Quilted, light padding parts
- Full zip
- 2 outer pockets



03 RED

15 NAVY

58 BURGUNDY

08 BLACK



**BRADLINA WS SWEAT
FIONA WS PANT**



NALA WS SWEAT
FIONA WS PANT



**ROCHELL WS FLEECE
MIMMI WS SOFTSHELL PANT**

6074

NALA WS SWEAT

34-44
FEMALE FIT



Main fabric:
95% polyester
5% Spandex
Quilt parts:
100% nylon

- Light, technical liner
- Moisture-transpiring
- Good breathability
- Quilted shoulders
- Adjustable at bottom with drawstring

- Full zip
- Brushed backside
- Two-way front zipper
- 2 outer pockets
- Badge at sleeve



08 BLACK



15 NAVY



03 RED



52 WHITE

6071

CORAL WS CREWNECK

34-44
SLIM, FEMALE FIT

100% polyester

- Technical, light 1st layer
- Moisture-transpiring

- Good breathability
- Contrast flatlock seams



08 BLACK



46 CERISE



13 YELLOW

6094

EAZY WS PRIMALOFT VEST

34-44
FEMALE FIT



100% polyester

- Technical vest
- Moisture-transpiring
- Good breathability
- Light padding

- Adjustable at bottom with drawstring
- 2 outer pockets



13 YELLOW



81 TEAL



03 RED



15 NAVY



33 BLUE



08 BLACK

6959

**SISELA
WS 1/2 ZIP**

34-44
SLIM, FEMALE FIT

92% polyester
8% elastane

- Light, technical 1st layer
- Moisture-transporting
- Good breathability

- Stretch fabric
- 1/2 zip



15 NAVY



58 BURGUNDY



08 BLACK

6973

**FINDA
WS DOWN SKIRT**

34-44
FEMALE FIT



100% nylon
100% duck down
650 fp

- Quilted
- Side zip opening
- Adjustable waist with elastic band
- 1 inner pocket



08 BLACK

6079

**DEBRA
WS 3/4 PANT**

34-44
SLIM, FEMALE FIT



93% polyester
7% elastane

- Technical 1st layer pant
- Good breathability
- Moisture-transporting

- Brushed backside
- Elastic band at waist
- Stretch fabric



18 CHARCOAL



08 BLACK



SAMI WS LONGSLEEVE
SAMI WS LONGJOHN

6082

**SAMI
WS LONGSLEEVE**

34-44
SLIM, FEMALE FIT

48% merino wool
48% polyester
4% lycra

- Natural climate control for superior comfort
- Designed to keep the body cool and dry
- Rapidly draws sweat away from the skin
- Protection against post exercise chill

- Natural elasticity and shape retention
- Bacteria inhibiting and odour control
- Excellent breathability



08 BLACK



46 CERISE



05 GREY

6081

**SAMI
WS LONG JOHN**

34-44
SLIM, FEMALE FIT

48% merino wool
48% polyester
4% lycra

- Natural climate control for superior comfort
- Designed to keep the body cool and dry
- Rapidly draws sweat away from the skin
- Protection against post exercise chill

- Natural elasticity and shape retention
- Bacteria inhibiting and odour control
- Excellent breathability



08 BLACK



46 CERISE



05 GREY

6083

**WISPY
WS T-SHIRT**

34-44
SLIM, FEMALE FIT

48% merino wool
48% polyester
4% lycra

- Natural climate control for superior comfort
- Designed to keep the body cool and dry
- Rapidly draws sweat away from the skin
- Protection against post exercise chill

- Natural elasticity and shape retention
- Bacteria inhibiting and odour control
- Excellent breathability



08 BLACK



46 CERISE



05 GREY

6084

**ALTITUDE
WS HOT PANTS**

34-44
SLIM, FEMALE FIT

48% merino wool
48% polyester
4% lycra

- Natural climate control for superior comfort
- Designed to keep the body cool and dry
- Rapidly draws sweat away from the skin
- Protection against post exercise chill

- Natural elasticity and shape retention
- Bacteria inhibiting and odour control
- Excellent breathability



08 BLACK



46 CERISE



05 GREY

6054

**ELWA WS
ZIP-IN JACKET**

34-46
FEMALE FIT



94% polyester
6% Spandex

Primaloft Black blend:
50% Primaloft
50% duck down

- Zip-in-system
- Wind- and waterproof
- All seams sealed
- Good breathability
- Regular padding
- Adjustable hood
- Adjustable sleeves with velcro
- Adjustable at bottom with drawstring

- Adjustable at waist with drawstring
- 3 outer pockets (total)
- Fleece-lined waist pockets
- Two-way front zipper
- Badge at sleeve
- Quilted inner jacket with Primaloft Black blend insulation



08 BLACK



58 BURGUNDY



50 MUD



15 NAVY



BLACK INNER JACKET

6064

**PASSION
WS PARKA**

34-44
FEMALE FIT



100% nylon

- Wind- and waterproof
- All seams sealed
- Good breathability
- Pile lining at hood and upper back
- Regular padding
- Adjustable hood
- Adjustable sleeves with snap
- Removable faux fur
- Rib cuffs

- Adjustable at bottom
- Adjustable at waist
- 3 outer pockets (total)
- Fleece-lined waist pockets
- Inner mesh pocket
- Inner mobile pocket
- Waterproof zippers
- Badge at sleeve
- Welded sleeve pocket



08 BLACK



58 BURGUNDY



15 NAVY



81 TEAL



52 WHITE

6049

**TRACY
WS JACKET**

34-44
FEMALE FIT, OVERSIZED

Shell:
88% polyester
12% nylon

Inner jacket:
100% nylon

- Two-in-one system
- Adjustable hood
- Adjustable sleeves with velcro
- Two-way front zipper
- Adjustable at bottom

- 3 outer pockets (total)
- Quilted zip-in jacket
- Rib knitted cuffs and bottom hem



08 BLACK



50 MUD



15 NAVY



BLACK INNER JACKET

6984

**RUTH
WS JACKET**

34-44
FEMALE FIT



100% nylon 6.6
100% duck down
650 fp

- Windproof and water-repellent
- Breathable
- Diamond quilted
- Adjustable, removable hood with drawstring

- Lycra cuffs
- Adjustable at waist with snaps
- Two-way front zipper
- Metal details



08 BLACK

6062

**MOUNTAIN
WS JACKET**

34-44
FEMALE FIT



94% polyester
6% Spandex

- Wind- and waterproof
- All seams sealed
- Good breathability
- Stretch fabric
- Regular padding
- Adjustable hood
- Removable faux fur trim
- Adjustable sleeves with snap

- Adjustable at waist with drawstring
- 4 outer pockets (total)
- Fleece-lined waist pockets
- Inner pocket
- Two-way front zipper
- Badge at sleeve



50 MUD



52 WHITE



58 BURGUNDY



08 BLACK

6056

**JHANA
WS JACKET**

34-44
FEMALE FIT



100% polyester

- "Down touch" padding
- 4 outer pockets
- Fleece-lined waist pockets
- Adjustable, removable hood with drawstring
- Removable faux fur trim

- Knitted cuffs
- Adjustable at bottom with drawstring
- Smock belt
- Two-way front zipper
- Metal details



68 SILVER



15 NAVY



50 MUD



08 BLACK

6050

**HERMINE
WS JACKET**

34-44
FEMALE FIT



100% nylon
100% duck down
650 fp

- Breathable
- Quilted
- Premium down (duck down)
- Adjustable hood with drawstring

- 2 outer pockets
- Fleece-lined waist pockets
- Inner mobile pocket
- Lycra cuffs



68 SILVER



15 NAVY



50 MUD



08 BLACK

6051

**TANJI
WS LINER**

34-44
FEMALE FIT



100% nylon
100% duck down
650 fp

- Quilted
- Lightweight
- Breathable

- Adjustable at bottom
- Lycra tape at hood and sleeves
- 2 outer pockets



50 MUD



08 BLACK



15 NAVY



68 SILVER



81 TEAL

6052

**LILLY
WS JACKET**

34-44
FEMALE FIT

100% nylon

- Quilted
- Lightweight
- Assymmetric zipper

- 2 outer pockets
- Badge at sleeve



68 SILVER



15 NAVY



08 BLACK

6080

**GATE
WS COAT**

34-46
FEMALE FIT



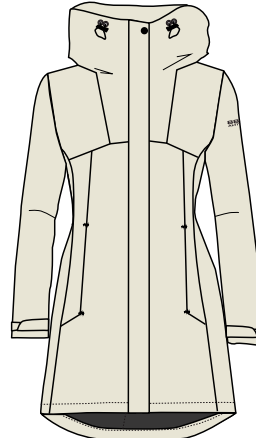
100% nylon

- Wind- and waterproof
- All seams sealed
- Good breathability
- Mesh lining
- Adjustable hood

- Adjustable sleeves with velcro
- 2 outer pockets (total)
- Fleece-lined waist pockets
- Inner pocket
- Two-way front zipper



50 MUD



68 SILVER



08 BLACK

6067

**SNAKE WS
SOFTSHELL JACKET**

34-46
FEMALE FIT



100% polyester

- Windproof and water-repellent
- Good breathability
- Stretch fabric
- Fleece backside
- Mesh lining at front
- Adjustable at bottom with drawstring

- Adjustable hood with drawstring
- 2 outer pockets (total)
- Fleece-lined waist pockets
- Welded chest pocket
- Reflex details
- Elastic lycra at sleeve ends



81 TEAL



15 NAVY



46 CERISE



08 BLACK

6954

**SCARLET
WS RAIN SET**

34-46
FEMALE FIT



100% polyester

- Wind- and waterproof
- All seams sealed
- Good breathability
- Mesh lining
- Adjustable hood
- Adjustable sleeves with velcro

- Adjustable at bottom with drawstring
- 2 outer pockets (total)
- Inner mesh pocket
- Waterproof zippers
- Welding details
- Rain pant with elastic waist, mesh lining and reflex print



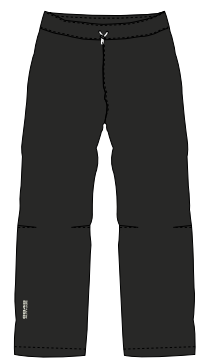
46 CERISE



50 MUD



08 BLACK



BLACK PANT

6088

**NEVADO
WS SWEAT**

34-44
FEMALE FIT

80% cotton
20% polyester
300 g

- Sweat hoodie
- Terry backside
- Peach wash
- Rib knitted cuffs

- 2 pockets
- Cotton drawstrings at hood
- Embroidery at chest



10 LT GREY MELANGE



97 DK GREY MELANGE



L2 BLACK MELANGE

6086

**ILLMANI
WS SWEAT**

34-44
FEMALE FIT

80% cotton
20% polyester
300 g

- Sweat hoodie
- Terry backside
- Peach wash
- Rib knitted cuffs

- Chest pocket
- Cotton drawstrings at hood
- Rubber badge at sleeve



L2 BLACK MELANGE



97 DK GREY MELANGE



10 LT GREY MELANGE

6087

**PICCHU
WS SWEAT**

34-44
FEMALE FIT

80% cotton
20% polyester
300 g

- Crewneck
- Terry backside

- Flock print and embroidery
- Rib knitted cuffs



10 LT GREY MELANGE



97 DK GREY MELANGE

6089

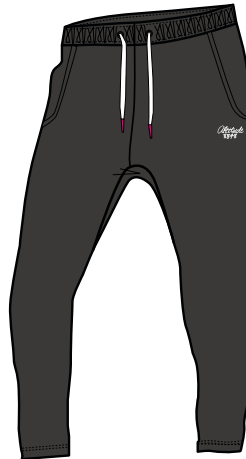
**PLOMO
WS SWEAT PANT**

34-44
FEMALE FIT. LOW CROTCH.

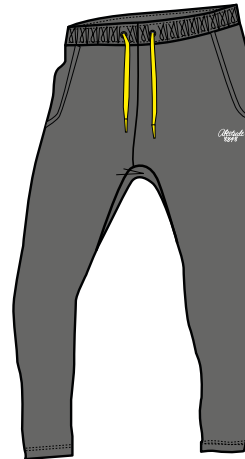
80% cotton
20% polyester
300 g

- Sweat pant
- Terry backside
- Stripe at side of leg
- Rib knitted at waist

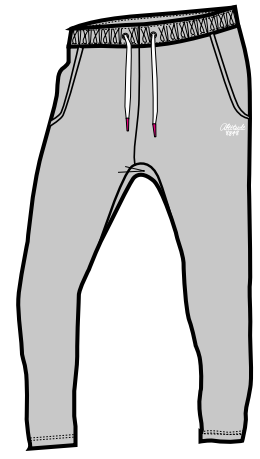
- Cotton drawstring at waist
- 3 outer pockets
- Embroidery at leg



L2 BLACK MELANGE



97 DK GREY MELANGE



10 LT GREY MELANGE

6085

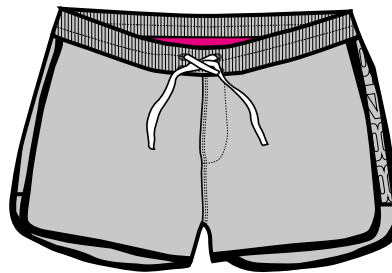
**LANIN
WS SHORTS**

34-44
FEMALE FIT

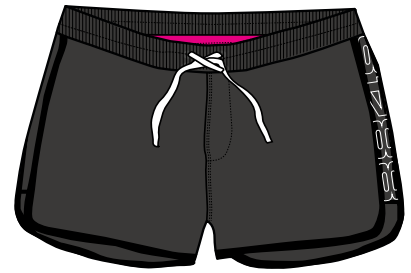
80% cotton
20% polyester
300 g

- Sweat shorts
- Terry backside
- Contrast pipings
- Rib knitted at waist

- Cotton drawstring at waist
- 2 outer pockets
- print at side



10 LT GREY MELANGE



97 DK GREY MELANGE





JUNIOR



JUNIOR COLLECTION

8677

EPSILON JR JACKET

120-170 CL
UNISEX FIT

durAtec
EXTREME



85% nylon
15% elastane

- Wind- and waterproof
- All seams sealed
- Good breathability
- Stretch fabric
- Regular padding
- Adjustable, removable hood
- Adjustable sleeves with velcro
- Lycra cuffs
- Snowskirt

- Adjustable at bottom with drawstring
- 4 outer pockets (total)
- Ski pass pocket
- Fleece-lined waist pockets
- Waterproof zippers
- Welding details
- 2 embroidery badges



03 RED

33 BLUE

08 BLACK

15 NAVY

81 TEAL

8676

COOKIE JR JACKET

120-170 CL
GIRLS FIT

durAtec
EXTREME



85% nylon
15% elastane

- Wind- and waterproof
- All seams sealed
- Good breathability
- Stretch fabric
- Regular padding
- Adjustable, removable hood
- Adjustable sleeves with velcro
- Lycra cuffs
- Adjustable at bottom

- Snowskirt
- 5 outer pockets (total)
- Ski pass pocket
- Fleece-lined waist pockets
- Inner mesh pocket
- Waterproof zippers
- Embroidery badge
- Welding details



08 BLACK

58 BURGUNDY

46 CERISE

15 NAVY

8678

TRACK JR PANT

120-170 CL
UNISEX FIT

durAtec
EXTREME



85% nylon
15% elastane

- Wind- and waterproof
- All seams sealed
- Good breathability
- Stretch fabric
- Regular padding
- Snow gaiters

- Reinforcement patches at ankles
- Pre-shaped knees
- Belt included
- 2 outer pockets
- Embroidery badge



33 BLUE

03 RED

15 NAVY

46 CERISE

08 BLACK



EPSILON JR JACKET
TRACK JR PANT



COOKIE JR JACKET
TRACK JR PANT



NEW LAND JR JACKET
SCRAMBLER JR PANT



TAMARA JR JACKET
INCA JR PANT

8679

NEW LAND JR JACKET

120-170 CL
UNISEX FIT



100% nylon
Melange details:
44% nylon
44% polyester
12% spandex

- Wind- and waterproof
- All seams sealed
- Good breathability
- Regular padding
- Adjustable, removable hood
- Adjustable sleeves with velcro
- Adjustable at bottom with drawstring
- Snowskirt
- 4 outer pockets (total)
- Ski pass pocket
- Fleece-lined waist pockets
- Inner mesh pocket
- Waterproof zippers
- Welding details



8669

TAMARA JR JACKET

120-170 CL
GIRLS FIT



100% nylon
Melange details:
44% nylon
44% polyester
12% spandex

- Wind- and waterproof
- All seams sealed
- Good breathability
- Regular padding
- Adjustable, removable hood
- Adjustable sleeves with velcro
- Adjustable at bottom with drawstring
- Snowskirt
- 3 outer pockets (total)
- Ski pass pocket
- Fleece-lined waist pockets
- Inner mesh pocket



8681

SCRAMBLER JR PANT

120-170 CL
UNISEX FIT



100% nylon
Melange details:
44% nylon
44% polyester
12% spandex

- Wind- and waterproof
- All seams sealed
- Good breathability
- Regular padding
- 2 outer pockets (total)
- Fleece-lined waist pockets
- Snow gaiters
- Reinforcement patches at ankles
- Pre-shaped knees
- Removable, adjustable bib suspenders
- Belt included
- Reinforced seat



34 GREEN 33 BLUE 13 YELLOW 03 RED 08 BLACK

JUNIOR COLLECTION

8667

OCTANS JR JACKET

120-170 CL
UNISEX FIT

durAtec[®] EXTREME 100% nylon

- Wind- and waterproof
- All seams sealed
- Good breathability
- Regular padding
- Adjustable, removable hood
- Adjustable sleeves with velcro
- Rib at bottom
- Snowskirt
- 3 outer pockets (total)
- Ski pass pocket
- Fleece-lined waist pockets
- Inner mesh pocket
- Leather details (synthetic)



8693

OZY JR JACKET

120-170 CL
UNISEX FIT

durAtec[®] EXTREME 100% nylon

- Wind- and waterproof
- All seams sealed
- Good breathability
- Regular padding
- Adjustable, removable hood
- Adjustable sleeves with velcro
- Snowskirt
- Rib at bottom
- 4 outer pockets (total)
- Ski pass pocket
- Fleece-lined waist pockets
- Leather details (synthetic)



8680

NILTE 16 JR PANT

120-170 CL
UNISEX FIT

durAtec[®] EXTREME 100% nylon

- Wind- and waterproof
- All seams sealed
- Good breathability
- Regular padding
- Snow gaiters
- Reinforcement patches at ankles
- Pre-shaped knees
- Belt included
- 3 outer pockets
- Leather details (synthetic)





OCTANS JR JACKET
NILTE 16 JR PANT



SIGRID JR JACKET
ESTER JR SOFTSHELL PANT

8663

INCA JR PANT

120-170 CL
UNISEX FIT



100% nylon

- Wind- and waterproof
- All seams sealed
- Good breathability
- Regular padding
- Fleece lining (upper part)

- Snow gaiters
- Reinforcement patches at ankles
- Pre-shaped knees
- Belt included
- 2 outer pockets



NEON PINK

15 NAVY

03 RED

52 WHITE

08 BLACK

58 BURGUNDY

13 YELLOW

46 CERISE

33 BLUE

81 TEAL

8668

SIGRID JR JACKET

120-170 CL
GIRLS FIT



94 % polyester
6% spandex

Quilt details:
100% polyester

- Windproof and water repellent
- Seams sealed at shoulders and sleeves
- Good breathability
- Regular padding
- Adjustable, removable hood
- Removable faux fur trim
- Adjustable sleeves with velcro

- Snowskirt
- 4 outer pockets (total)
- Ski pass pocket
- Fleece-lined waist pockets
- Inner mesh pocket
- Waterproof zippers



46 CERISE

58 BURGUNDY

08 BLACK

8662

ESTER JR SOFTSHELL PANT

120-170 CL
UNISEX FIT, TIGHT



100% polyester

- Windproof and water repellent
- Good breathability
- Stretch
- Snow gaiters

- Pre-shaped knees
- Belt included
- 2 outer pockets



08 BLACK

52 WHITE

46 CERISE

8665

KID JR SOFTSHELL JACKET

120-170 CL
UNISEX FIT

durAtec
SOFTSHELL

100% polyester

- Windproof and water repellent
- Excellent breathability
- Regular padding
- Stretch
- Adjustable, removable hood
- Adjustable sleeves with velcro
- 4 outer pockets (total)
- Fleece-lined waist pockets
- Inner mesh pocket
- Snowskirt
- Waterproof zippers
- Rib at bottom
- Big application at chest
- Leather details (synthetic)



03 RED



81 TEAL



33 BLUE

8683

MONITOR JR PARKA

120-170 CL
UNISEX FIT

durAtec
EXTREME

100% polyester

- Wind- and waterproof
- All seams sealed
- Good breathability
- Warm padded
- Adjustable, removable hood
- Removable faux fur trim
- Adjustable sleeves with velcro
- Adjustable at waist
- Adjustable at bottom
- 5 outer pockets (total)
- 1 inner pocket
- Fleece-lined hand-warming pockets
- Leather details (synthetic)



50 MUD



08 BLACK



15 NAVY

8682

TROLI JR JACKET

120-170 CL
UNISEX FIT

durAtec
EXTREME

100% nylon

- Wind- and waterproof
- All seams sealed
- Good breathability
- Light padding
- Adjustable, removable hood
- Diamond quilt lining
- Rib at sleeve and bottom



15 NAVY



50 MUD



08 BLACK

8666

**MICK 16
JR SOFTSHELL JACKET**

120-170 CL
UNISEX FIT



100% polyester

- Windproof and water-repellent
- Good breathability
- Stretch
- Fleeeced backside
- Removable hood
- 3 outer pockets
- Lycra piped sleeve opening



8664

**KARLA JR
SOFTSHELL JACKET**

120-170 CL
GIRLS FIT



100% polyester

- Windproof and water repellent
- Good breathability
- Stretch
- Fleeeced backside
- Removable hood
- 3 outer pockets (total)
- Lycra piped sleeve opening



8542

**STRATUS
JR PANT**

120-170 CL
UNISEX FIT



100% nylon

- Wind- and waterproof
- All seams sealed
- Good breathability



JUNIOR COLLECTION

8671

**ALMATI
JR LINER**

120-170 CL
UNISEX FIT

100% polyester
Quilt: 100% nylon, padded

- Lightweight and warming liner
- Quilted polyester body
- Polyester sleeves
- 2 outer pockets (total)

- Welded pocket at sleeve
- Adjustable at bottom



8673

**ORLANDO
JR SWEAT**

120-170 CL
UNISEX FIT

100% polyester

- Technical sweatshirt
- Moisture-transporting
- Fleeeced backside

- 3 outer pockets
- Lycra piped sleeve and bottom opening



8670

**ALFA
JR SWEAT**

120-170 CL
UNISEX FIT



93% polyester
7% spandex

- Technical sweatshirt
- Moisture-transporting
- Good breathability
- Stretch

- Fleeeced backside
- 1 outer pocket
- Woven badge



8675

TOM JR FLEECE

120-170 CL
UNISEX FIT

100% polyester
micro fleece

- Light and warming fleece sweater
- Moisture-transporting
- Good breathability

- 3 outer pockets
- Lycra piped sleeve and bottom opening



8674

THOR JR SWEAT

120-170 CL
UNISEX FIT



100% polyester

- Functional sweat melange
- Rib at bottom and sleeves
- 2 outer pockets
- Fleece backside, contrast colour

- Adjustable hood with drawstring
- Print at chest
- Leather details (synthetic)



8689

**SHOW
JR CREW**

120-170

JUNIOR, UNISEX FIT

48% merino wool
48% polyester
4% lycra

- Natural climate control for superior comfort
- Designed to keep the body cool and dry
- Rapidly draws sweat away from the skin
- Protection against post exercise chill

- Natural elasticity and shape retention
- Bacteria inhibiting and odour control
- Excellent breathability



05 GREY



08 BLACK



33 BLUE



46 CERISE

8688

**CIRCUS
JR LONG JOHN**

120-170

JUNIOR, UNISEX FIT

48% merino wool
48% polyester
4% lycra

- Natural climate control for superior comfort
- Designed to keep the body cool and dry
- Rapidly draws sweat away from the skin
- Protection against post exercise chill

- Natural elasticity and shape retention
- Bacteria inhibiting and odour control
- Excellent breathability



05 GREY



08 BLACK



33 BLUE



46 CERISE



8687

**DOT LINE
MIN SUIT**

70-140
UNISEX FIT

**durAtec[®]
SUPREME**

100% nylon

- Wind- and waterproof
- All seams sealed
- Excellent breathability
- Regular padding
- Removable hood
- Adjustable sleeves with velcro
- Adjustable at waist with elastic band

- 2 outer pockets
- Fleece-lined waist pockets
- Snow gaiters
- Reinforced seat
- Reinforced knees
- Reflex details
- Embroidery badge



13 YELLOW



34 GREEN



46 CERISE



58 BURGUNDY



33 BLUE



08 BLACK

8686

**FLAKE
MIN JACKET**

70-120
UNISEX FIT

**durAtec[®]
EXTREME**

100% nylon

- Wind- and waterproof
- All seams sealed
- Good breathability
- Regular padding
- Removable hood
- Adjustable sleeves with velcro

- Adjustable at bottom with drawstring
- 2 outer pockets
- Fleece-lined waist pockets
- Reflex details
- Embroidery badge



08 BLACK



33 BLUE



46 CERISE



34 GREEN



13 YELLOW

8685

**PYRO
MIN PANT**

70-120
UNISEX FIT

**durAtec[®]
EXTREME**

100% nylon

- Wind- and waterproof
- All seams sealed
- Good breathability
- Regular padding
- Fleece lining upper back
- Snow gaiters
- Adjustable bib suspenders
- Partial side zip opening
- Waist with elastic
- Reinforced seat
- Reinforced knees
- Reflex details



08 BLACK



46 CERISE



15 NAVY



13 YELLOW

ACCESSORIES



1707

SOFTSHELL GLOVE

S, M, L, XL, XXL
REGULAR FIT



100% polyester

- Windproof and water-repellent
- Stretch fabric
- Good breathability



08 BLACK

1708

SOFTSHELL MITTEN

6, 7, 8
REGULAR FIT



100% polyester

- Windproof and water-repellent
- Stretch fabric
- Good breathability



08 BLACK

1779

JR SOFTSHELL GLOVE

6-8, 8-10, 10-12, 12-14
JUNIOR, UNISEX FIT



100% polyester

- Windproof and water-repellent
- Stretch fabric
- Good breathability



08 BLACK

1858

RIDER HAT

ONE SIZE
UNISEX FIT

70% acrylic
30% wool

- Jaquard knitted



15 NAVY

81 TEAL

68 SILVER

03 RED

13 YELLOW

50 MUD

46 CERISE

58 BURGUNDY

33 BLUE

08 BLACK

10 LT GREY MELANGE

ACCESSORIES

1877

BIG LOGO HAT

ONE SIZE
UNISEX FIT

100% acrylic

• Knitted



46 CERISE



78 GREY MELANGE



15 NAVY



68 SILVER



81 TEAL



13 YELLOW

1878

LINER HAT

ONE SIZE
UNISEX FIT



100% polyester
CoolMax

• Knitted
• Moisture-transpiring

• Keeps skin cool and dry
• Woven label and badge



08 BLACK



14 DK GREY

1879

MAIN HAT

ONE SIZE
UNISEX FIT

100% acrylic

• Jaquard knitted



08 BLACK



14 DK GREY



50 MUD



15 NAVY



03 RED



13 YELLOW

1880

SHIELD HAT

ONE SIZE
UNISEX FIT

70% acrylic
30% wool

• Knitted
• Badge at side



08 BLACK



10 LT GREY MELANGE



50 MUD



68 SILVER

1881

SKI LOVER HAT

ONE SIZE
UNISEX FIT

100% acrylic

• Jacquard knitted



03 RED



10 LT GREY MELANGE



08 BLACK

1882

WOOL 16 HAT

ONE SIZE
UNISEX FIT

100% Merino wool

• Jacquard knitted



68 SILVER



50 MUD



14 DK GREY

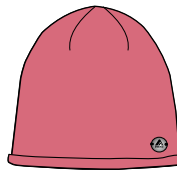
1883

BLUEBERRY HAT

ONE SIZE
UNISEX FIT

40% wool
20% kashmere
20% nylon
20% viscose

• Knitted
• Small metal badge at side



41 ROSE



97 DK GREY MELANGE



50 MUD



68 SILVER

1884

BACK LOOP HAT

ONE SIZE
UNISEX FIT

100% acrylic

• Knitted



33 BLUE



46 CERISE



14 DK GREY



50 MUD



41 ROSE



68 SILVER



81 TEAL

1885

MOUNTAIN HAT

ONE SIZE
UNISEX FIT

100% acrylic

• Jacquard knitted



81 TEAL



03 RED



46 CERISE



33 BLUE



78 GREY MELANGE

ACCESSORIES

1887

**PAU
SKI SOCK**

40-42, 43-45
UNISEX FIT

50% wool
29% nylon
20% acrylic
1% elastane

- Ski sock for comfort at low temperatures
- Medium weight for warmth
- Ergonomically adapted cushioning
- Jacquard knitted
- Terry at crucial areas



08 BLACK



81 TEAL

1886

**AME
WS SKI SOCK**

34-46, 37-39, 40-42
FEMALE FIT

50% wool
29% nylon
20% acrylic
1% elastane

- Ski sock for comfort at low temperatures
- Medium weight for warmth
- Ergonomically adapted cushioning
- Jacquard knitted
- Terry at crucial areas



46 CERISE



08 BLACK

1888

**MOUNTAIN
JR SKI SOCK**

31-33, 34-36, 37-39
JUNIOR FIT

50% wool
29% nylon
20% acrylic
1% elastane

- Ski sock for comfort at low temperatures
- Medium weight for warmth
- Ergonomically adapted cushioning
- Jacquard knitted
- Terry at all inside



78
GREY
MELANGE



33 BLUE



46 CERISE

1843

**LESTER
WHEELBAG**

80 L

Tarpaulene

- Adjustable handles
- Wheels
- Waterproof zippers

- 1 outer pocket
- Removable shoulder strap



46 CERISE



08 BLACK



83 LIME



06 TURQUOISE

1890

**ACTIVE
BAG**

ONE SIZE

100% polyester

- Gym sack
- Polyester drawstring

- Reinforcement eyelets
- Big logo print



59 NEON PINK



08 BLACK

1891

**ALTITUDE
BAG**

50 LZ

100% polyester

- Water-repellent
- Removable shoulder strap
- Side handles with rubber grips
- Inner mesh pocket in lid
- Transparent outer pocket
- Webbing tape reinforcements

- Carbine hook for hanging
- Lining at inner floor



08 BLACK

1893

**BEST
BACKPACK**

ONE SIZE

100% polyester

- Water-repellent
- Padded shoulder straps
- 2 outer pockets

- Padded computer pocket
- Leather details (synthetic)
- Badge



08 BLACK



58 BURGUNDY

MATERIALS





DURATEC® – A FAMILY OF CAREFULLY SELECTED FUNCTIONAL FABRICS

8848 Altitude has in close cooperation with some of the world's leading fabric manufacturers, developed an own system of high performance materials; durAtec®. The materials have been developed to meet a variety of needs where different benefits are prioritized – from comfortable softshells to superlight 3-layer constructions.



DURATEC® SUPREME

- durAtec® supreme is a laminated material on the reverse of a shell fabric. It is waterproof, with a water column of >20 metres (withstands pressure of at least 20 metres in a cylindrical measuring instrument).
- durAtec® supreme "breathes" 15-20,000 g/m²/24 h (i.e. is permeable to water vapor from inside).
- durAtec® supreme is windproof.
- durAtec® supreme garments are seam sealed, which makes the garments fully waterproof.
- durAtec® supreme **stretch** provides extraordinary freedom of movement and comfort.



DURATEC® EXTREME

- durAtec® extreme is a coating on the reverse of a shell fabric. It is waterproof, with a water column of >10 metres (withstands pressure of at least 10 metres in a cylindrical measuring instrument).
- durAtec® extreme is windproof.
- durAtec® extreme "breathes" 6-8,000 g/m²/24 h (i.e. is permeable to water vapor from inside).
- durAtec® extreme garments are seam sealed, which makes the garments fully waterproof.



DURATEC® COMFORT

- durAtec® comfort is a coating on the reverse of a shell fabric. It is waterproof, with a water column of >5 metres (withstands pressure of at least 5 m in a cylindrical measuring instrument).
- durAtec® comfort is windproof.
- durAtec® comfort "breathes" (i.e. is permeable to water vapor from inside).
- durAtec® comfort garments have no taped seams (this means the ready-to-wear garment is water-repellent only).



DURATEC® SOFTSHELL

- durAtec® softshell is a membrane, laminated on the reverse of a shell fabric. It is waterproof, with a water column of >8 metres (withstands pressure of at least 8 metres in a cylindrical measuring instrument).
- durAtec® softshell is windproof.
- durAtec® softshell features a stretchable material for added comfort.
- durAtec® softshell "breathes" 5-6,000 g/m²/24 h (i.e. is permeable to water vapor from inside).
- durAtec® softshell garments have no taped seams (this means the ready-to-wear garment is water-repellent only).



DURATEC® SOFTSHELL ADVANCED

- durAtec® softshell is a membrane, laminated on the reverse of a shell fabric. It is waterproof, with a water column of >10 metres (withstands pressure of at least 10 metres in a cylindrical measuring instrument).
- durAtec® softshell is windproof.
- durAtec® softshell features a stretchable material for added comfort.
- durAtec® softshell "breathes" 10,000 g/m²/24 h (i.e. is permeable to water vapor from inside).
- durAtec® softshell garments have no taped seams. This means the ready-to-wear garment is water-repellent only.



BLUESIGN® APPROVED FABRIC

Products carrying the "Bluesign® approved fabric" label contain semifinished goods that were manufactured according to the Bluesign® standard.

- Consumer safety: Bluesign® stands for skin-friendly and low-contaminant textiles.
- Sustainable production: Bluesign® stands for innovative, resource-conserving and environmentally friendly production.
- High-tech and comfort: Bluesign® stands for uncompromising functionality and quality with "feel-good guarantee".



POLARTEC® FLEECE

Polartec® Classic fabrics are the reference standard for lightweight warmth and breathability. It is the original fleece offering unparalleled quality and durability. Polartec® Classic fabrics have been primary insulation layer of choice among outdoor enthusiasts for three decades. These fabrics are available in a range of weights to provide the right level of insulation for most outdoor activities. Polartec® Classic Micro® fabrics are the lightest and are excellent for a warm first layer or lightweight sweater. The 100% polyester velour construction creates air pockets that trap air and retain body heat. Unlike other fleece fabrics, Polartec® products maintain their insulating ability and non-pilling appearance after repeated laundering.



DUPONT™ COMFORMAX® CLASSIC

DuPont™ ComforMax® Classic has 4-5 times more fiberfill layers than other insulation. Each single fiberfill layer is only 5-10g/sqm and this true multi-layer structure is the secret of superior performance

Benefits:

- Excellent warmth
- Soft and lightweight
- Durability



PRIMALOFT® BLACK INSULATION DOWN BLEND

From the performance experts at the Primaloft® brand, the world's first combination of water-repellent down and hydrophobic fibers completely changes insulation as you know it. Primaloft® Black Insulation Down Blend is the ultimate hybrid of 50% Primaloft® ultra-fine fibers and 50% water-repellent down offering no compromises – with warmth equivalent to 550 fill down within your gear, and permanent water-resistant technology that maintains 94% of its warmth when wet. This marks a game-changing innovation with all the lightweight warmth, loft, packability and comfort of standard down, but outstanding wet-weather thermal performance that even dries 4X faster. Primaloft® Black Insulation Down Blend offers innovation that pushes boundaries of what your gear can accomplish, with performance you can feel and trust.

Benefits:

- Warm as 550 fill down
- Water resistant
- Breathable
- Packable
- Lightweight
- Superior softness



DUCK DOWN

8848 Altitude only use duck down (not goose down) in the down garments. Our duck down is produced in supervised farms and is never picked from living animals. We use three different down quality blends, for different purposes:

- 100% down: Maximum fillpower, optimal for superlight, high performance down garments.
- 80% down/20% feather: Light and very efficient insulation in down garments for allround use.
- 70% down/30% feather: Comfortable and efficient insulation.



SYNTHETIC FUR

8848 Altitude use only synthetic fur ("faux" fur) in high quality for all garments with fur trimmings.

WOOL + POLYESTER MIX UNDERWEAR

- Unique fabrics designed to keep you cool and dry in 48% merino wool, 48% polyester and 4% lycra
- Natural climate control for superior comfort
- Rapidly draws sweat away from the skin
- Inherent protection against post exercise chill
- Natural elasticity and shape retention
- Bacteria inhibiting and odour control
- Enhanced UV protection



COOLMAX

- COOLMAX® fabric pulls moisture away from your skin.
- COOLMAX® fabric absorbs and spreads moisture out across fabric to enhance evaporative drying rate.
- Air moves in to keep your body cool and dry.



ENVIRONMENT

- The global focus on the Environment is continuously putting higher demands on us. Our aim is that our products shall be free from substances that can have adverse environmental and health effects. Our contribution to this is to inform our suppliers about the importance of developing their environmental system.
- Since 2007 EU has a Chemical law called REACH. As a European company we need to have knowledge about the restricted chemicals in REACH. We help our suppliers during the entire production process to improve and secure our products.
- Since 2013 we have also a consultant helping us to build up a knowledge system of chemicals to secure our buying process.
- For further information regarding REACH, please visit: www.echa.europa.eu

CODE OF CONDUCTS

- We do assure that all our garments are produced in factories with a healthy working environment. All our suppliers have to sign our Code of Conduct, which is based on the ILO conventions and UN Global Compact.
- To avoid double auditing of the factories we also accept initiatives as BSCI, ETI, WRAP and SA8000.
- We closely follow their auditing processes and support them to make the needed improvements. If the factory never has been audited, we do our own audit made by a third party auditing company.

QUALITY PROCESS

- For us it is very important with the quality process both in our own organisation and in the supplier's. We always find more efficient ways to work to be able to serve our customers, but also to secure the quality of the product.
- We choose fabric and accessory suppliers who focus on CSR and environmental work.
- We arrange with random checks to assure that above requirements have been followed.
- We have one person in the company who works with CSR and environment.



ART NO	STYLE NAME	PAGE	ART NO	STYLE NAME	PAGE
1890	ACTIVE BAG	93	8666	MICK 16 JR SOFTSHELL JACKET	83
8670	ALFA JR SWEAT	84	6059	MIMMI WS SOFTSHELL PANT	45
8671	ALMATI JR LINER	84	6060	MINDY WS JACKET	40
1891	ALTITUDE BAG	93	7109	MISTI SHELL JKT	6
6084	ALTITUDE WS HOT PANTS	63	6061	MIVA WS JACKET	46
6068	ALYSSA WS SWEAT	56	8683	MONITOR JR PARKA	82
1886	AME WS SKI SOCK	92	7145	MONSERRATE SHORTS	33
1884	BACK LOOP HAT	91	1885	MOUNTAIN HAT	91
7122	BASE 68 PANT	12	1888	MOUNTAIN JR SKI SOCK	92
7139	BASE BOXER	26	6062	MOUNTAIN WS JKT	65
6069	BAY WS JACKET	50	6074	NALA WS SWEAT	60
7011	BEN 1/2 ZIP SWEAT	25	7137	NEO CREWNECK	26
1893	BEST BACKPACK	93	6088	NEVADO WS SWEAT	68
1877	BIG LOGO HAT	90	8679	NEW LAND JR JACKET	77
7064	BIRK JACKET	31	6063	NIELA WS JACKET	40
1883	BLUEBERRY HAT	91	8680	NILTE 16 JR PANT	78
7132	BONATO 16 JACKET	28	8667	OCTANS JR JKT	78
7115	BRADFORD LINER	22	7120	ODIN FLEECE VEST	22
6070	BRADLINA WS SWEAT	56	8673	ORLANDO JR SWEAT	84
7147	CALBUTO SWEAT	32	8693	OZY JACKET	78
6078	CASTEL WS SWEAT	53	6064	PASSION WS PARKA	64
7146	CHRIS HOODY	32	1887	PAU SKI SOCK	92
8688	CIRCUS JR LONG JOHN	86	7135	PEACH LAND PARKA	28
6053	CLEARE WS PANT	46	7121	PERCIER HOODY	25
8676	COOKIE JR JKT	72	6087	PICCHU WS SWEAT	68
6071	CORAL WS CREWNECK	60	7148	PIERCE PANTS	33
7126	CORAM LINER	19	6089	PLOMO WS SWEAT PANT	69
7105	DAFT SOFTSHELL JKT	30	6065	POPPY WS PANT	43
6079	DEBRA WS PANT	61	8685	PYRO MIN PANT	87
7106	DIMON JACKET	6	6066	RAMONA WS JACKET	43
7116	DON FLEECE	22	1858	RIDER HAT	89
8687	DOT LINE MIN SUIT	87	6075	ROCHELL WS FLEECE	56
7133	DRIFTER JACKET	29	7110	RONIN JACKET	6
7117	EAZY PRIMALOFT VEST	19	6091	RUTH WS DOWN PARKA	65
7118	ECRIN SOFTSHELL	16	6081	SAMI WS LONG JOHN	63
6077	ELECTRA WS JACKET	37	6082	SAMI WS LONGSLEEVE	63
6054	ELWA WS ZIPIN JACKET	64	6954	SCARLET WS RAINSET	67
7124	ENZO 3/4 PANT	25	8681	SCRAMBLER JR PANT	77
8677	EPSILON JR JKT	72	6076	SHELLY WS SOFTSHELL JACKET	50
8662	ESTER JR SOFTSHELL PANT	81	1880	SHIELD HAT	90
6055	FIONA PANT	37	8689	SHOW JR CREWNECK	86
8686	FLAKE MIN JACKET	87	8668	SIGRID JR JACKET	81
6080	GATE WS RAIN COAT	67	6959	SISELA WS 1/2 ZIP SWEAT	61
7107	GILLY PANT	11	1881	SKI LOVER HAT	91
7136	GRIP RAIN COAT	30	6067	SNAKE WS SOFTSHELL JKT	67
7127	GTS JACKET	5	1707	SOFTSHELL GLOVE	89
1760	HEKLA TRAIL PANT	51	1708	SOFTSHELL MITTEN	89
6050	HERMINE WS JKT	66	7032	STEVE SOFTSHELL PANT	15
6086	ILLMANI WS SWEAT	68	8542	STRATUS JR PANT	83
8663	INCA JR PANT	81	8669	TAMARA JR JACKET	77
6057	JASMIN WS JACKET	37	6051	TANJI WS LINER	66
7119	JEAN SWEAT	22	8674	THOR JR SWEAT	85
6056	JHANA WS JACKET	65	8675	TOM JR FLEECE	85
7002	JONES RAINSET	31	7138	TORY PANT	26
1779	JR SOFTSHELL GLOVE	89	8678	TRACK JR PANT	72
6058	KAJSA SOFTSHELL JACKET	45	6049	TRACY WS JACKET	64
8664	KARLA JR SOFTSHELL JACKET	83	7131	TRANS ALP JACKET	15
7108	KENSIN JACKET	12	7134	TRANSIT JACKET	29
8665	KID JR SOFTSHELL JACKET	82	7130	TRIPLE FOUR JACKET	12
6983	LAGUNA WS PANT	51	8682	TROLI JR JACKET	82
6085	LANIN WS SHORTS	69	7111	VENTURE 16 PANT	5
7144	LASCAR SWEAT	32	7113	VULPINE SHELL JACKET	11
6052	LILLY WS JACKET	66	7129	WAY POINT JACKET	30
1878	LINER HAT	90	7112	WESTON ZIPIN JKT	28
7104	LINUS DOWN LINER	31	6083	WISPY WS T-SHIRT	63
7125	LORENZO SWEAT	19	1882	WOOL 16 HAT	91
6072	LOUMIN WS SWEAT	53	7140	WT T-SHIRT	26
7033	LYON JACKET	29	7114	ZAPALERI PANT	11
6073	MADDIE WS SWEAT	53	7128	ZERO JACKET	31
1879	MAIN HAT	90			

8848 ALTITUDE

BOX 22216

SE-50412 BORÅS

SWEDEN

TEL +46 (0)33 250848

FAX +46 (0)33 416645

INFO@8848ALTITUDE.COM



**THE
SKI
LOVER'S
BRAND**



8848ALTITUDE.COM