

SNOWPLANT COLLECTION WORKBOOK



151112





SKI SCHOOL, CLUB AND UNIFORM CLOTHING



SNOWPLANT COLLECTION

DEVELOPED FOR PROFESSIONAL USE

Quality

- Extraordinary durability for everyday use
- Top performance for shifting activities and weather conditions
- Special details
- Timeless styles and fittings



Custom design

- Logo and artwork adaption in several techniques
- Name tag solutions
- Personalization

Colours

- Classic colours
- Colourproof workwear fabrics
- Colour matched second layers





7142

Vulpine Shell Jacket

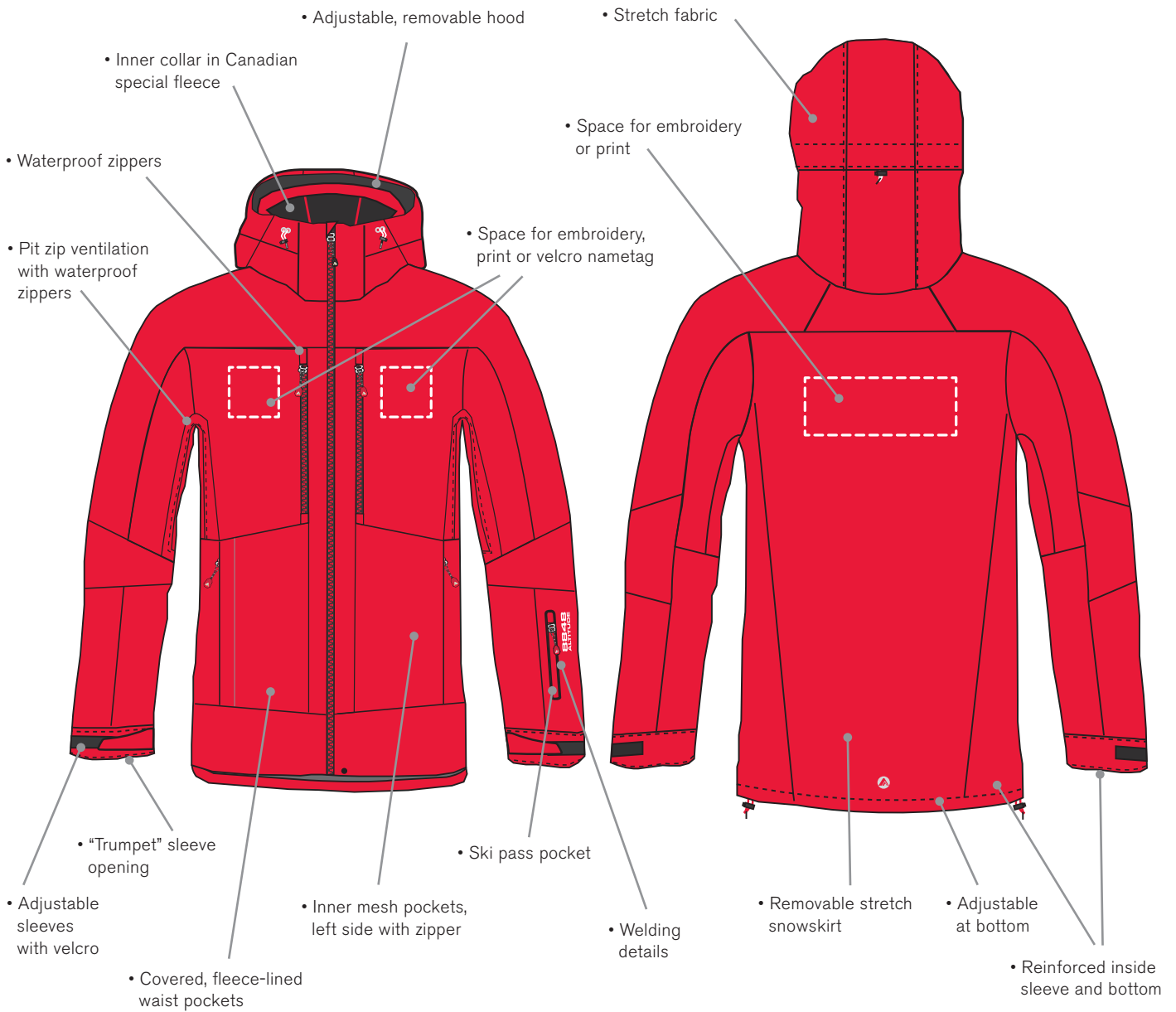
94% polyamid
6% elastane

S-XXL
REGULAR FIT

34-44
FEMALE FIT



- 2-PLY with mesh lining
- Wind- and waterproof
- All seams sealed
- Excellent breathability
- UV safe fabric
- Stretch fabric



03 RED

SNOWPLANT COLLECTION



08 BLACK

33 BLUE

Vulpine WS Shell Jacket



08 BLACK

03 RED

33 BLUE



7141

Haring Jacket

94% polyamid
6% elastane

S-XXL
REGULAR FIT

34-44
FEMALE FIT

durAtec[®]
EXTREME

- 2-PLY fabric
- Wind- and waterproof
- All seams sealed
- Excellent breathability
- UV safe fabric
- Stretch fabric

- Inner collar in Canadian special fleece
- Space for embroidery, print or velcro nametag
- Adjustable, removable hood
- Polyester lining
- Light insulated, 80 gr padding
- Waterproof zippers at sleeve and chest
- Space for embroidery, print or velcro nametag
- Ski pass pocket
- Pit zip ventilation
- Adjustable sleeves with velcro
- "Trumpet" sleeve opening
- Inner mesh pockets, left side with zipper
- Reinforced inside sleeve and bottom
- Lyca cuffs with thumb holes
- Reinforcement
- Removable stretch snowskirt
- Adjustable at bottom

33 BLUE

SNOWPLANT COLLECTION



08 BLACK



03 RED

Haring WS Jacket



08 BLACK



03 RED



33 BLUE



7143

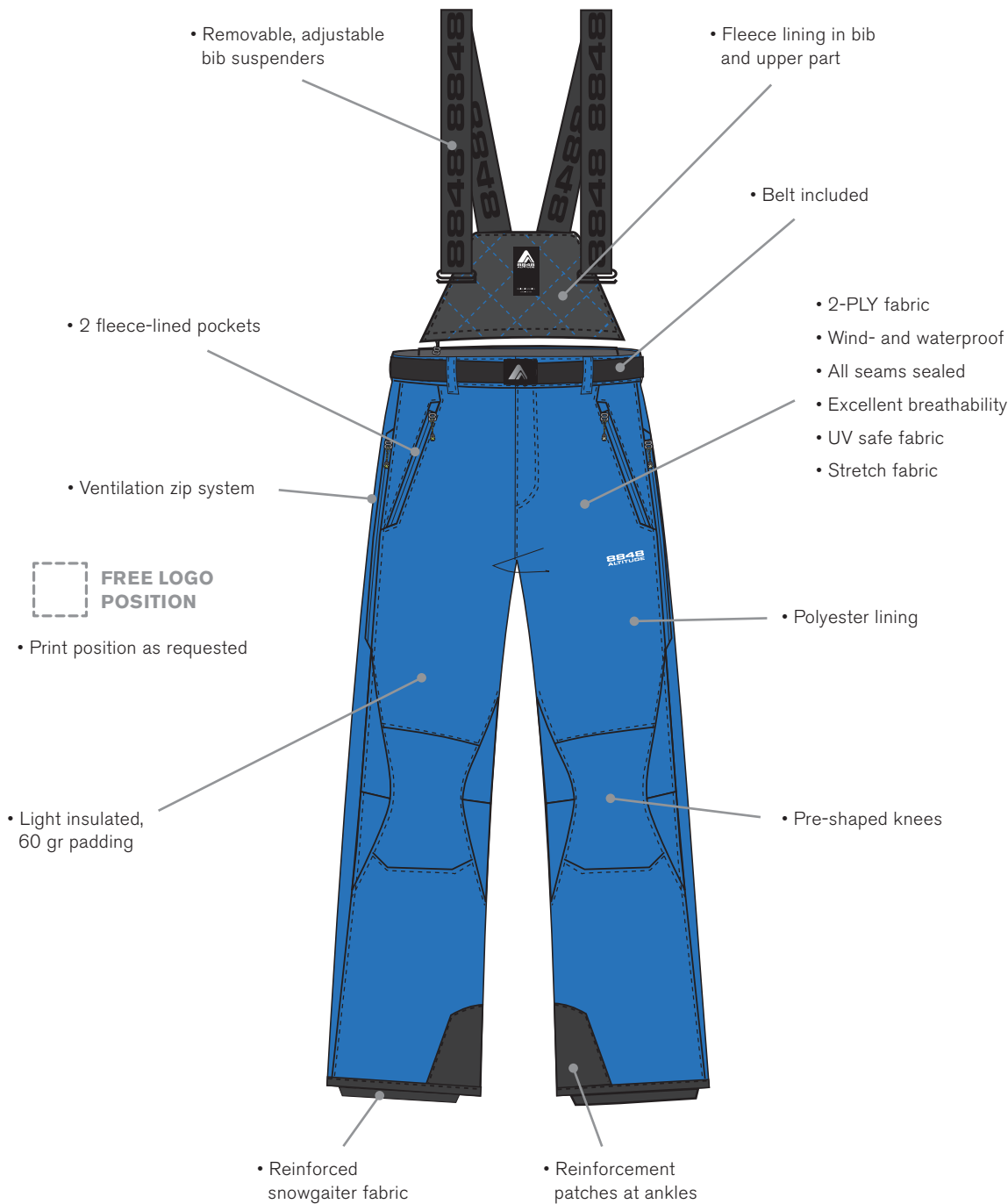
Venture Pant

94% polyamid
6% elastane

S-XXL
REGULAR FIT

34-44
REGULAR, FEMALE FIT

durAtec[®]
EXTREME



33 BLUE

SNOWPLANT COLLECTION



03 RED

08 BLACK

Venture WS Pant



03 RED

08 BLACK

33 BLUE



7152

Coach Pants

100% nylon

S-XXL
REGULAR FIT



08 BLACK

SNOWPLANT COLLECTION

7154

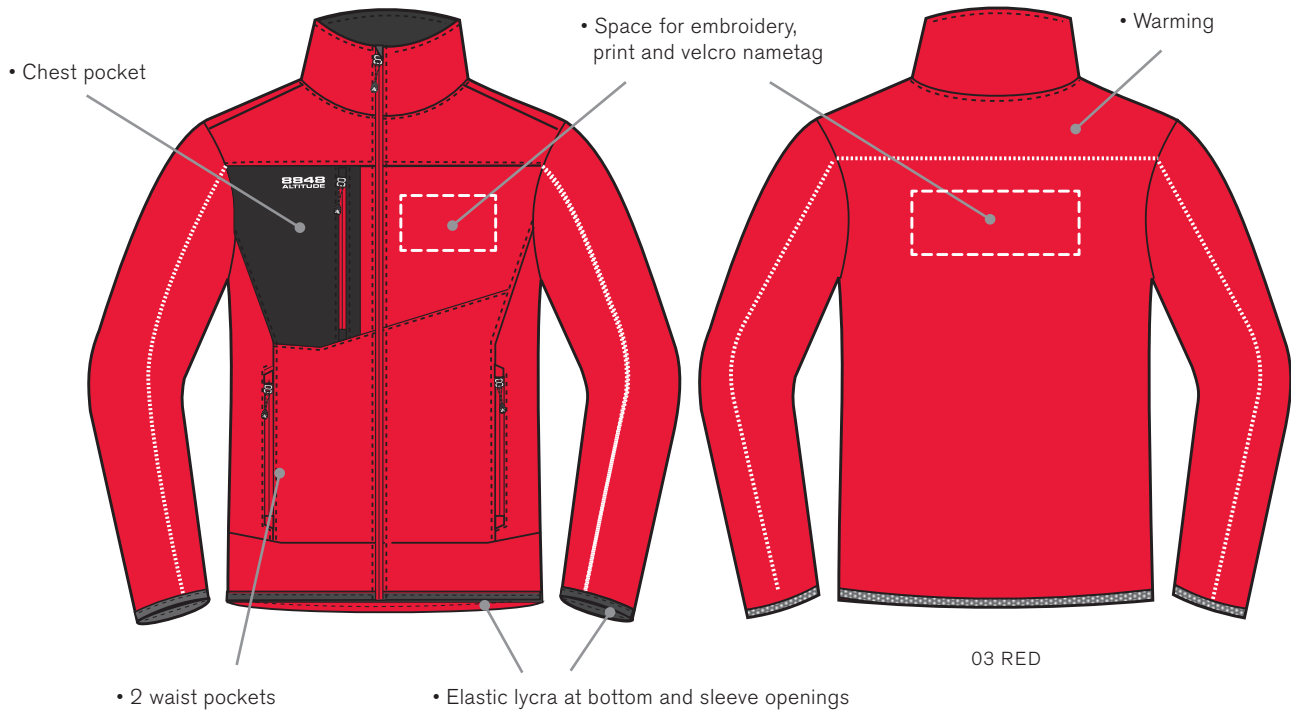
Thermal Sweat

100% polyester

S-XXL
REGULAR FIT

34-44
FEMALE FIT

- Durable polyester sweat
- Fleece backside
- Excellent breathability
- Moisture-transporting
- Warming



7154 Thermal WS Sweat





7117

Eazy Primaloft Vest

100% polyester
Primaloft ECO, 80 g

S-XXL
REGULAR FIT

34-44
FEMALE FIT



- Technical lightweight vest
- Moisture-transpiring
- Good breathability
- Light padding
- Warming

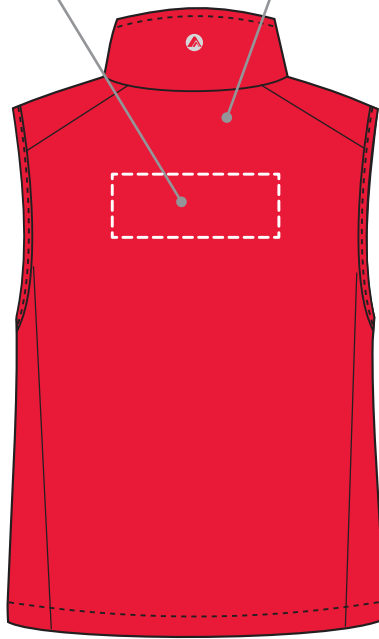
• Space for embroidery, print and velcro nametag

• Lycra pipings



• 2 waist pockets

• Adjustable at bottom with drawstring



03 RED



33 BLUE



08 BLACK

SNOWPLANT COLLECTION

7153

Heat Shorts

100% nylon

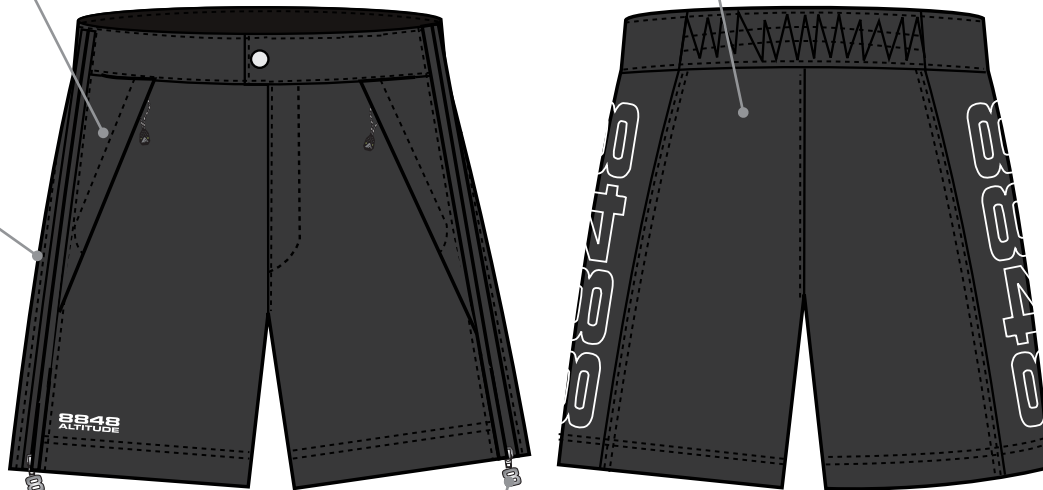
S-XXL
REGULAR FIT

durAtec[®]
EXTREME

- Technical Warm-up shorts
- Moisture-transpiring
- Good breathability
- 80 gram padding
- Warming

- 2 waist pockets

- Full side zip system



- Adjustable at bottom with drawstring

08 BLACK

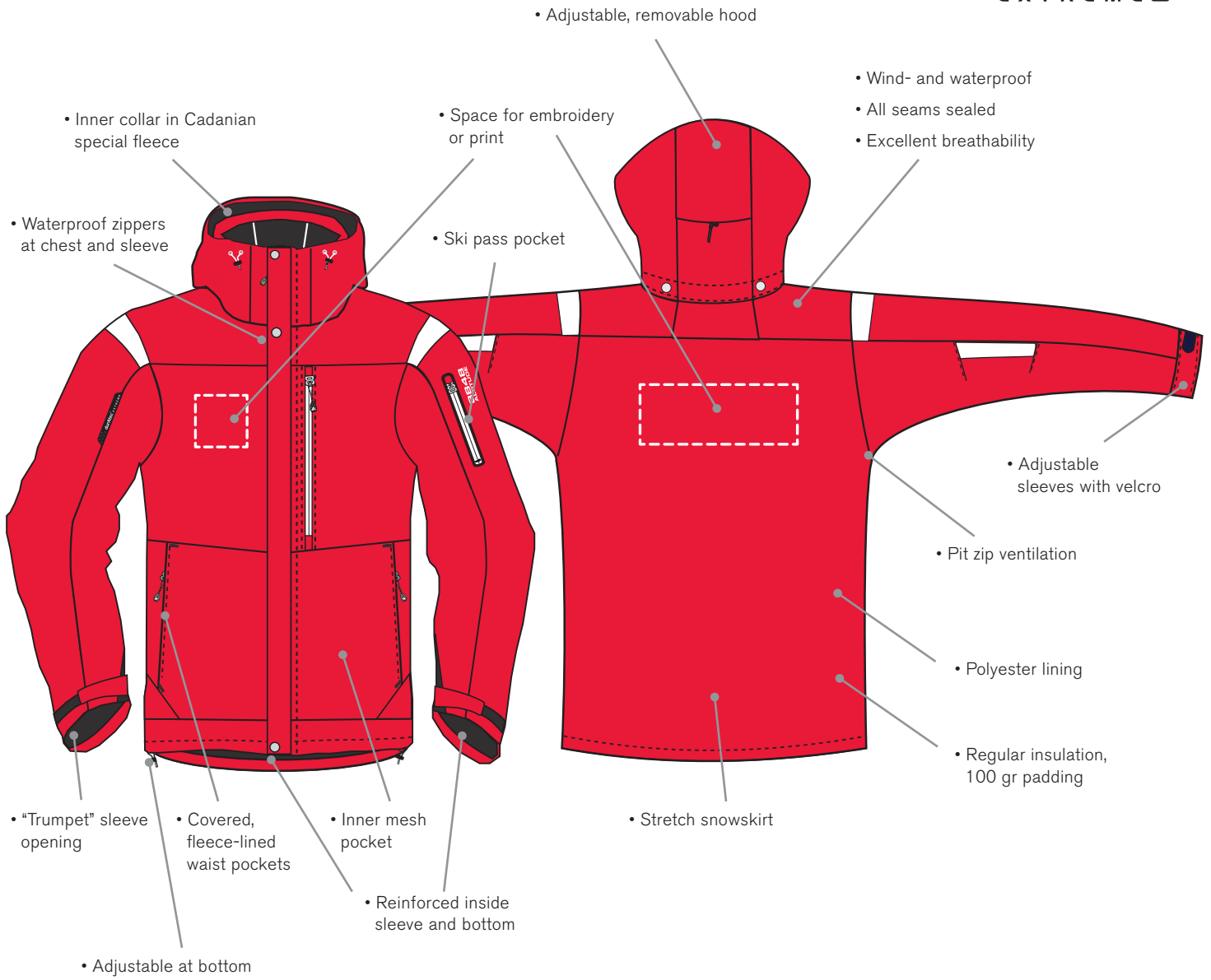


8690

Warren JR Jacket

85% nylon
15% Spandex

120-170
JUNIOR FIT



03 RED

SNOWPLANT COLLECTION JUNIOR



08 BLACK



33 BLUE

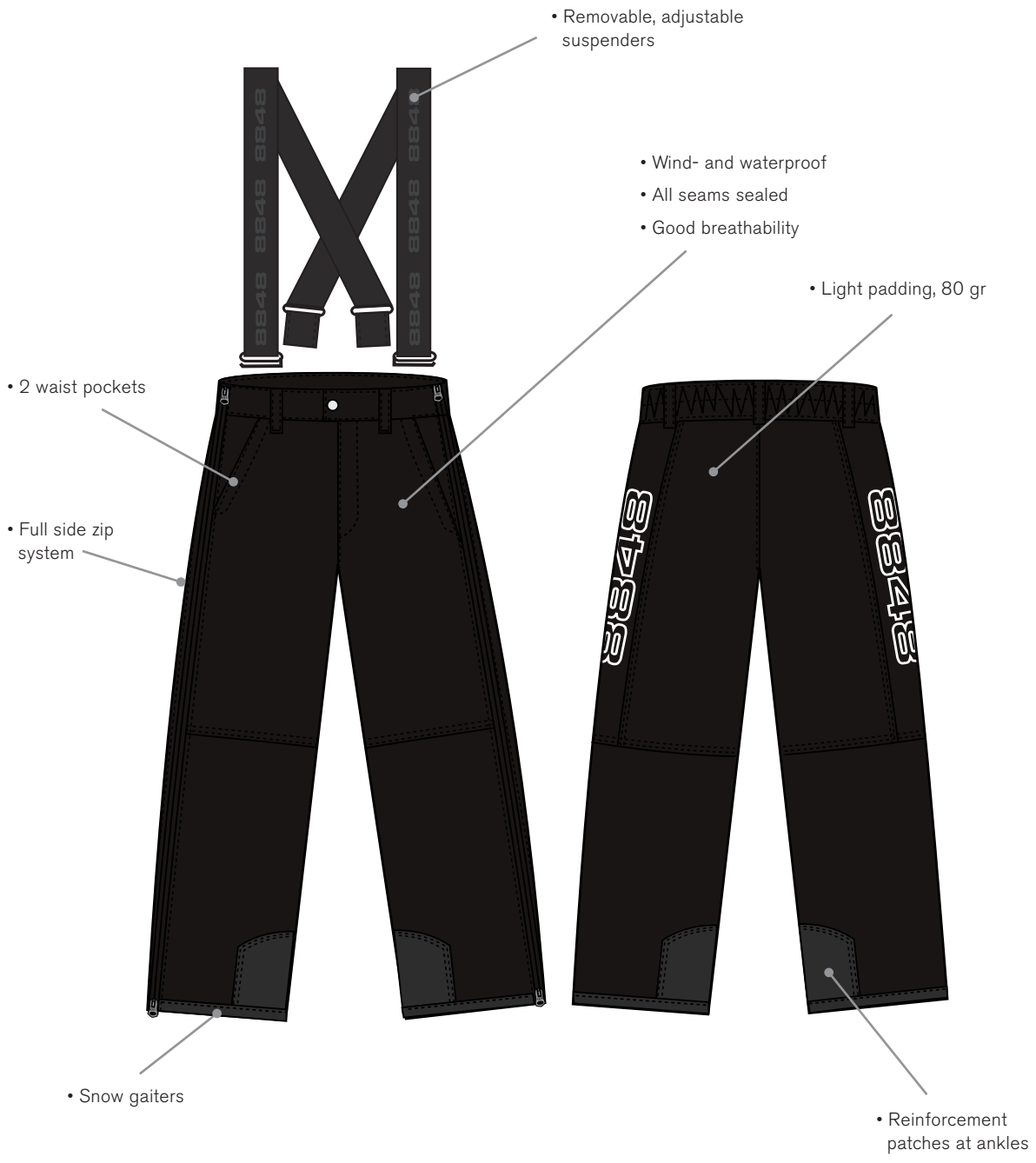


8201

Warm Up JR Pants

100% nylon

120-170
JUNIOR FIT



08 BLACK

SNOWPLANT COLLECTION JUNIOR

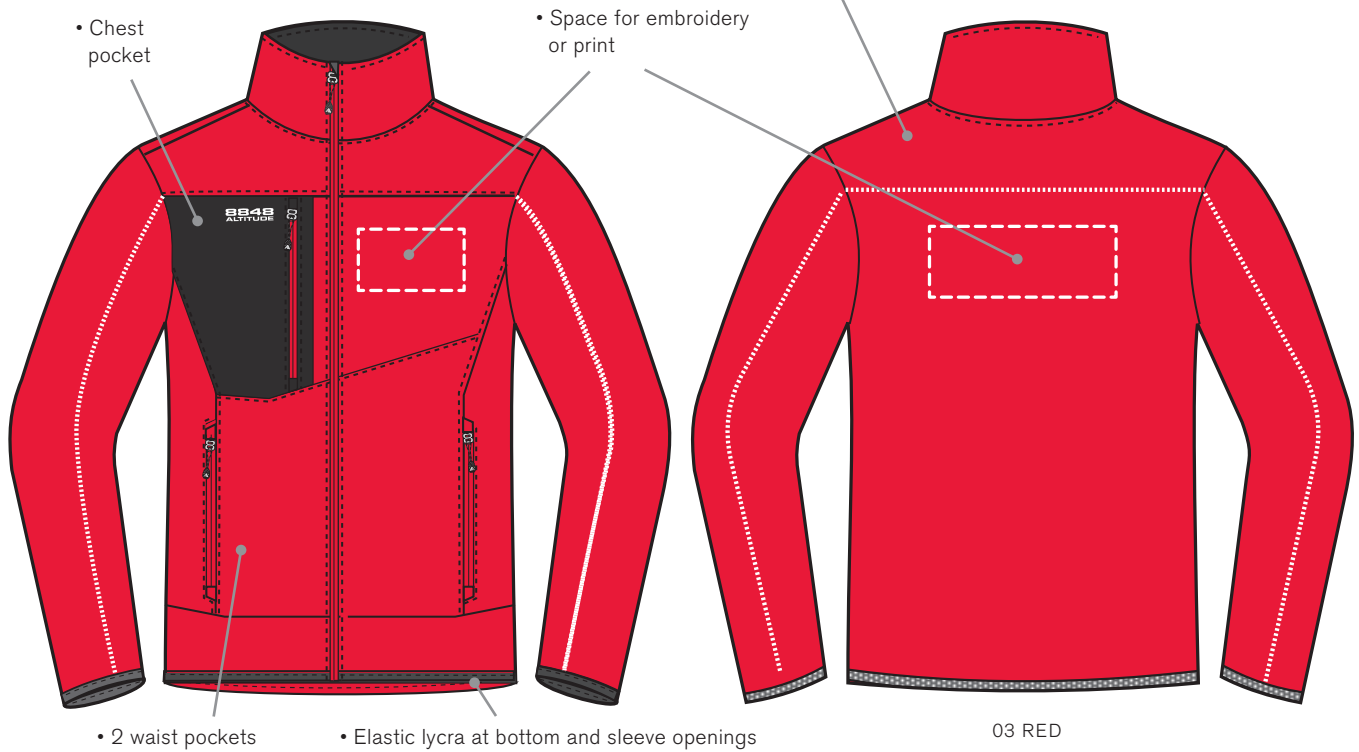
8694

Thermal JR Sweat

100% polyester

120-170
JUNIOR FIT

- Durable polyester sweat
- Fleece backside
- Excellent breathability
- Moisture-transporting
- Warming



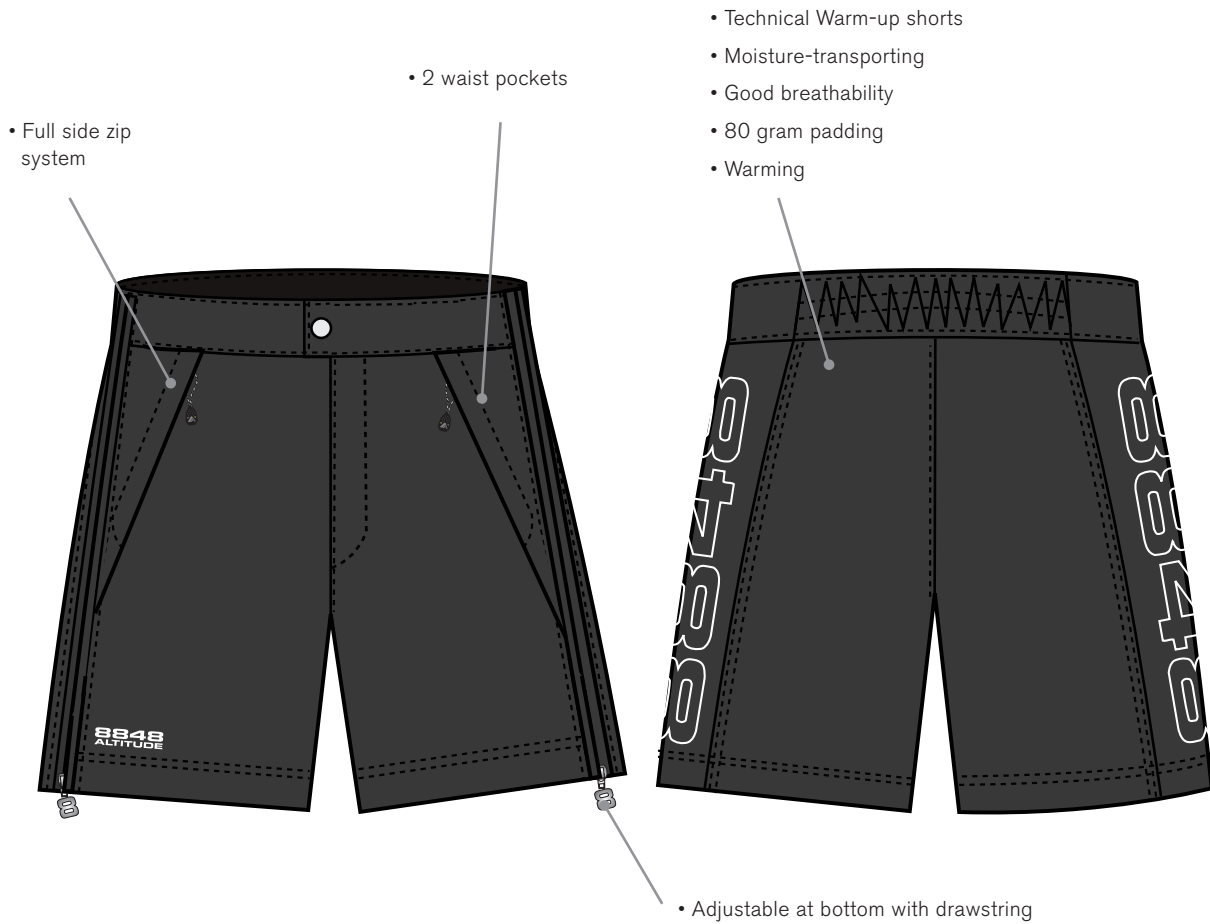
8692

Warm JR Shorts

100% nylon

120-170
JUNIOR FIT

durAtec[®]
EXTREME



08 BLACK

Chest artwork

Maximum size:

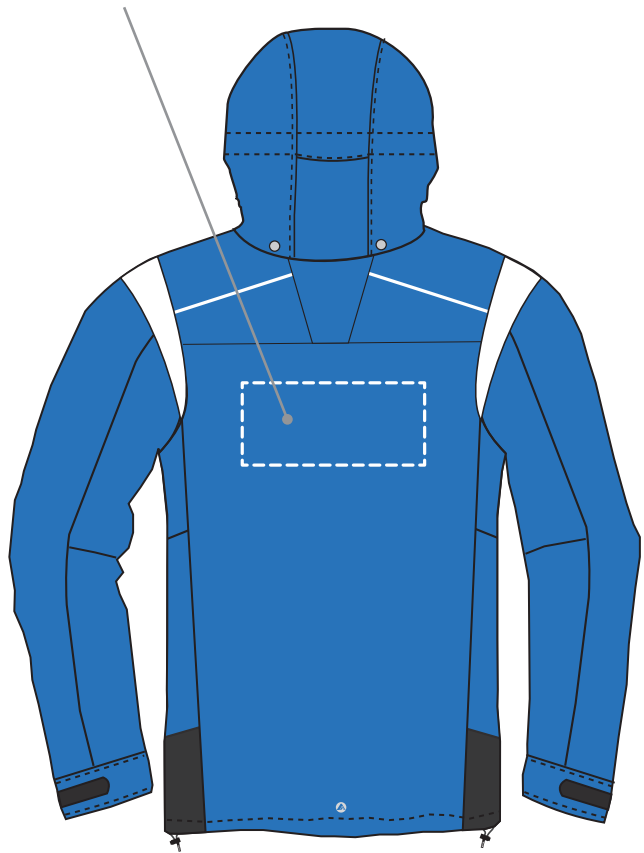
- 75 mm (width)
- 50 mm (height)



Back artwork

Maximum size:

- 260 mm (width)
- 200 mm (height)



8848 ALTITUDE

BOX 22216

SE-50412 BORÅS

SWEDEN

TEL +46 (0)33 250848

FAX +46 (0)33 416645

INFO@8848ALTITUDE.COM

THE SKI LOVER'S BRAND



8848ALTITUDE.COM

